

**LOPO® 乐普陶板**  
Terracotta Facade Panels

**福建省乐普陶板制造有限公司**  
FUJIAN LOPO TERRACOTTA PANELS MANUFACTURING CO., LTD.

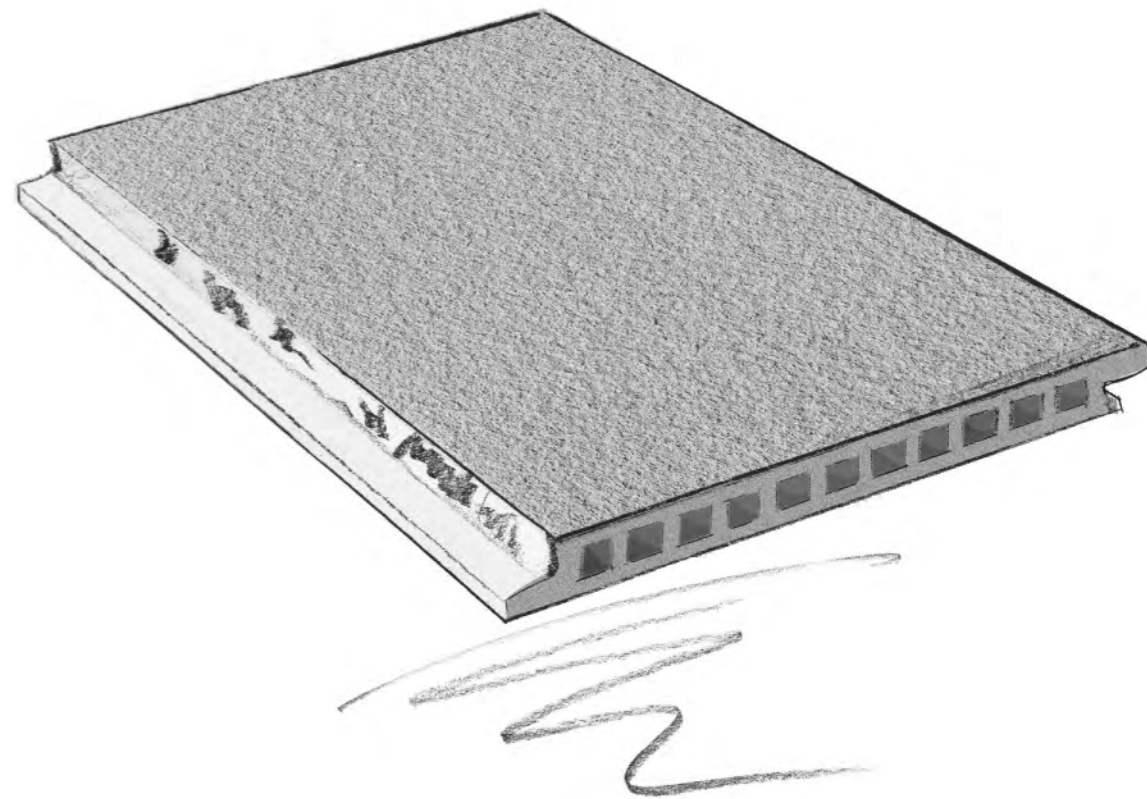
地址：福建省长泰县古农银塘工业区  
Add: Yintang Industrial Zone, Gunong, Changtai, Fujian Province  
E-mail: lopo@lopochina.com  
Tel: +86 159 6081 0759  
Fax: +86 592 3778925  
www.lopochina.com

LOPO TERRACOTTA PANEL TERRACOTTA ROOF TILE

与实际产品的颜色可能会有误差，正确色彩以实际产品为准。XTX 设计

NO:4

NO:4



**LOPO® 乐普**

**TERRACOTTA**

terracotta panel terracotta roof tile  
陶土板，陶土瓦

陶土專家 用心制陶



## 目录CONTENTS

- 02 陶文化  
*Pottery culture*
- 04 陶板的现代运用史  
*Application of terracotta panel  
in modern times*
- 08 乐普制陶 (公司发展史)  
*History Of Lopo Clay Tile*
- 10 企业文化  
*corporate culture*
- 16 陶板系列 建筑实景  
*Terracotta Panels Series*
- 75 乐普陶板部分工程案例名  
*Lopo Terracotta Panel Lproject Casus*
- 76 产品颜色与表面效果  
*Colors and Surfaces*
- 98 陶管百叶系列 建筑实景  
*Terracotta Stick Series*
- 114 陶板的优势特点  
*Characteristic of terracotta panel*
- 120 陶瓦系列  
*Terracotta Roof Tile Stick*

# 关于“陶”

## 一：陶起源

在漫長的遠古歲月中，原始人群以采集、漁獵為生，過着不定居的生活。後來，人類發現了火，并逐漸學會了使用和保存火，“火”的使用就為以後“陶”的產生，起到關鍵性的作用。

隨着原始農業和畜牧業的出現，人類開始了定居和半定居的生活。居于此，人們對於烹調、盛放和儲存食物器皿的需要越來越迫切，正是因為對“器皿”的需求，這就為“陶”的產生打下一個基礎。

人們在長期的勞動和生活實踐中，經常和泥土打交道，逐漸發現了粘土與適量的水混合後，它就會有粘性和可塑性，可以用手隨意把它塑造成各種形狀，在強烈的太陽光下曬乾，泥坯變硬，即可盛放幹東西。當然，這些土器由于沒有經過焙燒，不太堅固，使用時容易破損，尤其遇水易溶化，這就為陶器的出現準備了必要的條件。

人們在使用火的過程中發現，偶爾落入火堆中的土器，被燒成堅硬的器物，這一現象啟發先民們去燒制陶器。他們以土石為基本原料，充分發揮想象力和創造精神，制作出各種各樣的器具或裝飾坯體，然後置于火中煉燒，使其堅固定型而成為陶器——這便產生了“陶”！

## 二：陶传说

女媧：女媧摶(tuán)土造人的傳說，始見于《太平御覽》卷七八引《風俗通》：“俗說天地開辟，未有人民，女媧摶土作人。”

神農：神農制陶器的文獻，記載在《周書》一書中。據清朝馬嘯《經史》卷四引《周書》：“神農之時，天雨粟，神農遂而種之，作陶冶斧斤”。清朝朱珔所著《陶說》卷二引《周書》：“神農作瓦器”。宋朝《太平御覽》卷八百之十三亦引《周書》：“神農耕而作陶”。

舜：《墨子·高賢下》載：“瓦者，舜耕于歷山，陶于河濱，漁于雷澤，灰于常陽。”其它如《韓·非子難》也有類似記載。《史記·五帝本紀》：“舜耕于歷山，漁雷澤，陶河濱，作什器于壽丘，就時于負夏。”

寧封子：據《列仙傳》載：“寧封子者，黃帝時人也。世傳為黃帝陶正。有人過之，為其掌火，能出五色烟，久則以教封子積火自燒，而隨烟氣上下，視其灰爐，猶有其骨。時人葬其于寧北山中，故謂之寧封子。”

## 三：陶历史

遠在公元前5000多年前，我國浙江的阿姆渡就已經有了陶器，發現了瓷石。

1921年在河南濉池仰韶村發現了紅黑花紋的彩陶片與磨制過的石器共存。

1928年在山東歷城縣龍山鎮發現薄胎黑色有光澤的陶片，與石器和骨器并存，龍山文化的黑陶分布在中國沿海、中原和浙江各地區。龍山黑陶在燒制技術上有了顯著的進步，開始采用陶輪制坯，胎薄而均勻。

以上都是我國史前文化代表性的發掘和考據，但也證明在新石器時代，人類已經掌握了制陶的工藝，并制作了精緻的器皿。

在河南安陽曾發掘出白陶，是距今約3000年殷商時代的遺存，同時也發現有釉的陶器，這說明當時已經懂得用釉的方法。

至秦代（公元前246~206年）曾以大量磚瓦修建長城和阿房宮，這是土器和陶器制品用于建築的開始。秦始皇兵馬俑的發掘更充分證明了在秦代我國的制陶工藝已非常發達，大批在尺寸上類同真人真馬的精制陶俑當時已能成形和燒造的完美無缺，這是我國陶瓷工藝發展史上輝煌的成就。

由此可見中國的陶文化歷史悠久，是中華民族的寶貴歷史遺產之一。



一個聰明的原始人，發現鬆軟的泥土在燃燒後變得堅硬如石，于是他就將泥土做成用來盛水的器皿，然後用火來燒，便出現了“陶”。

土，是人生的基礎；水，是人生的命脈；火，是人類走向文明的基石。“土”和“水”的結合，經過“火”的煅燒，煉成了“陶”，一切都是那麼的自然和樸實。

有人說，自從人類知道用“火”就有了“陶”，陶的歷史便伴隨着“火”的文明源遠流長。

## 傳說



# 陶板的现代运用史

陶板，作為干挂幕牆材料，最早出現于1985年的歐洲，設計靈感來自于一位歐洲建築師對於中國兵馬俑的陶文化膜拜，將陶瓦的感覺從屋頂轉移到牆面，其特有的土陶質感和返璞歸真的色澤，使建築看起來更接近中國的兵馬俑藝術，遂將其命名為 Terracotta Panel。

而陶板幕牆的運用，最初起源于德國。工程師Thomas Herzog教授于1980年代設想將屋頂瓦應用到牆面，最終根據陶瓦的挂接方式，發明了用于外牆的干挂體系和幕牆陶板，并由此成立了一個專門生產陶板的工廠。1985年第一個陶板項目在德國慕尼黑落成。

隨着90年代玻璃幕牆被大量的應用于建築外觀設計，那些有超前思想的建築師，開始嘗試將玻璃的明快、現代質感和陶板的滄桑久遠的文明象征結合起來，形成古老與現代、原始感和科技感并存的建築表現形式，并大獲成功。

陶板的制造工藝，起源于屋頂瓦。進入二十世紀中葉以后，隨着建築外圍護結構的概念出現，輕鋼龍骨體系在建築中的應用得到了迅速的發展；與此同時，用于擠出、干燥、燒制的機械設備，在這一時期也隨着建築陶瓷工業的發展，更趨于現代化、科技化和自動化。

陶板的生產方法是將粘土經過不同配比，與水混煉成近似于雕塑用的陶泥狀，經高噸位真空擠壓機，通過設計好的模具出口擠出想要的產品泥胚，再經過相似于自然風干的干燥設備蒸發水分，最后經過超過1000℃的高溫窯爐燒制而成。

這種濕法擠壓成型的制陶工藝，使陶板不僅僅局限于“板”，還可以設計成不同形狀的模具得到不同形狀、規格的陶制品，能在一定程度上滿足建築設計的不同立面要求。于是，更多的建築師開始青睞于，用自己的創想定制需要的產品形式，使Terracotta，這一神奇的陶產品，被賦予更多的功能，諸如遮陽、棍型裝飾、綫條裝飾等。

因此，陶板，作為一種新型的幕牆材料，其不僅僅是幕牆挂板，更是一種把建築設計師的抽象設計理念形象化，將建築和藝術融為一體的載體，它們守護的是在繁華之外我們夢想的寧靜居所，是美化城市不可或缺的人文景觀。

## Application of terracotta panel in modern times

Terracotta panel, as the material of hanging curtain wall, first appeared in Europe in 1985. The inspiration came from a European architect who worshiped the earthenware culture of Chinese Terracotta Warriors. The architect transferred the feeling into creation of building material. The unique argil texture and natural color make the architecture look similar to the art of Chinese Terracotta Warriors. Therefore, it was named Terracotta Panel.

The application of terracotta curtain wall was initiated from Germany. The engineer Professor Thomas Herzog put forward a tentative plan to apply the roof tile to the wall and finally invented the hanging system and terracotta panel for external wall. As a result, a factory specified in the production of terracotta panel was established. In 1985, the first project of terracotta panel was completed in Munich of Germany.

As glass curtain wall has been extensively applied in the appearance design of architectures since 1990s, avant-garde architects sought to combine luminous and modern feeling of glass with terracotta panel to form with coexistence of ancient and modern style. The trial made a great success.

The manufacturing process of terracotta panel originated from the roof tile. After the middle period of 20th century with the emergence of the concept of outer retaining structure of architecture, the light steel keel system was applied in the architecture and developed rapidly. Meanwhile, mechanical equipment for extrusion, drying and firing tended to be modernized, technicalized and automated.

The production method of terracotta panel is that the clay is matched in different mixture ratio and mixed with water. The mashed mixture is loaded into high-tonnage vacuum extruder and extruded into the mud plinticle from the designed mould. The water content is evaporated by the drying equipment similar to natural air drying. And then the terracotta panel is fired in the high-temperature furnace under 1000 °C.

The process with extrusion forming in wet method will not only provide terracotta "panel" but also other different shapes and specification by designing different shapes of modules. It will meet different requirements for the architecture facade. Therefore, more architects tend to customize the product shape according to their ideas. And the terracotta, which is magical, is endowed with more functions, such as sun shading, rod-type decoration and line decoration.

As a result, as a new material for curtain wall, terracotta panel is not only the cladding of curtain wall but also the carrier for visualizing the abstract design concept of architects by bringing the architecture and art together. The terracotta panel is the indispensable human landscape for city beautification.

## 陶土專家 用心制陶

**传承:** 传扬历史的文明，继承千年的文化瑰宝。从红山遗址到北京故宫，从秦砖汉瓦到现代化新式建筑，陶砖随着人类的发展与进步，一代代的相传与继承。

乐普艺陶传承了陶的文化遗产，经过多年陶土建筑产品的研究与实践，从陶土砖——陶板——陶瓦，不断的发展与创新，既继承了陶的宝贵文化遗产，又将陶发扬光大。

**创新:** 创新是一个企业的灵魂，是使一个企业兴旺发达的不竭动力；创新让企业注入源源不断的新鲜血液。

乐普立足于基础陶板的生产，本着创新的精神，追求更卓越，更富有质感的陶板，先后研发出“手磨陶土砖”、“金属窑变砖”等系列，均是全国首创，开创了多样化，新时尚的陶土砖先河。

**专业:** 因为专业所以精彩，因为专业所以强大，因为专业所以值得信赖。

乐普公司从2002年起至今，十年磨砺，**专注于陶土建筑产品**的发展，研发，以及创新，从陶土砖——陶板——陶瓦，精彩的创新与发展，都源自于专业的探究。在业内，由于研发出了行业领先的高新技术产品系列，赢得了华润、万通等国内外知名房地产商的认同，并与万科集团、招商地产、碧桂园等建立起全面的战略合作伙伴关系。不仅如此，短短几年，乐普公司便发展成为全国最大最专业的研发、生产、销售一体化的劈开砖专业性企业，成为国内最具竞争实力的粘土质劈开砖生产经营基地。只有具备专业实力，才能具有如此强大的发展力。

## Devoted Experts of Clay Products

**Inheritance:** Clay tile was of long history in China, which could be seen from Hongshan historic sites to Beijing Imperial Palace and used in ancient bulidings to modern new construction. Clay tile is cultural treasures of China worthy of being passed on from generation to generation.

LOPO has been inherited this cultural heritage and carrying it forward through years of research and practice (from clay tile to terracotta products).

**Innovation:** Innovation is the soul as well as the undying driving force of an enterprise by providing a fertile sources for development.

With excellent engineering team and skilled workers, LOPO continues to constantly innovate in the range of clay products. Independent development and innovation capacity are our source of infinite energy to keep our products improving and meet diversified needs of customers.

**Professional:** Every wonderful work originates from professional spirit.

Those years, our products have been well-received by our customers from all over the world. We have established strategic partnership with noted real estate companies in China, such as Vanke, Criad, Vantong, Merchants Estate companies etc. Depending on our devoted services, qualified products and competitive prices, we have also won the approval of our distributors from Japan, Korea, Taiwan, HK, Malaysia, USA, Canada and Europe.



源于天然纯净陶土  
*From Pure Terracotta*

源于天然纯净陶土，  
传承中华千年陶瓷文化，  
萃取制陶历史精髓，  
陶土专家，用心制陶……

## History of LOPO Clay Tile

2002, LOPO launched the cornerstone-laying ceremony in Tangshang Industrial District, Guanqiao, Nanan, Fujian, which not only opened a new chapter for LOPO to be the largest and most competitive manufacturer of clay tile in China, but also unveiled the new and glorious era for LOPO.

Apr. 22, 2003, the first extrusion-molding clay tile was launched, which originated from the wisdom and efforts of all LOPOER. This kind of brick is shaped under vacuum extrusion and backed in high-temperature tunnel kiln with high-quality clay materials adopted, creating an unfading charm.

2003, LOPO set up the culture stone production line which meant that LOPO began the production of culture stone. With strong capabilities of R&D we are able to provide diversified and personalized choice for architects and developers. 2004, LOPO culture stone embarked on high-volume production, what characterized by thousands of special shapes and amazing colors, the culture stone products vividly represent the natural and original texture of real stone which are perfectly meet the people's needs of nature-honoring and nature-returning.

2004, the first clay tile with multiple blending colors was successfully produced in LOPO. Adopted unique formulation and technology, a piece of clay tile can gain special blending colors while firing in the high-temperature kiln.

2004, hand-made clay tile announced its first appearance. This type of tile is originality with the inspiration coming from the sands in Xiamen Gulangyu Island. Polished solely by hand and weathered in high pressure with delicate manual processing for rock surface, clay surface and quick-sand surface, the natural water-eroded surface.

2005, the clay tile of flame color was produced. With the improvement of manufacture craft, the color of clay tile is full of great naturality.

2006, the clay tile of metallic color came into the market, which was firstly created by LOPO in china. It is stable and decent, which started a new fashion of ceramic tile.

2008, LOPO became the largest production base of clay tile in China, of which was three most advanced production lines and full-automatic temperature-controlling tunnel kiln with annual production of 4500000m<sup>2</sup> clay tiles, 600000m<sup>2</sup> culture stone.

2009, the first purely-handmade clay tile was produced by LOPO in China. It made by hand, is natural and real, close to nature.

2009, LOPO started the first phase of terracotta facade factory in Changtai, Fujian, which covers 200000 square meters area.

In 2009, LOPO established strategic and cooperative partnership with well-known real estate enterprise - Vanke Co., Ltd.

In 2010, LOPO established strategic and cooperative partnership with Financial Street Holding Co. Ltd. and China Merchants Real Estate (Shenzhen) Co., Ltd..

2011, LOPO art ceramics acquired Fujian FGM terracotta panel co., ltd. and began to have two large brands of LOPO terracotta panel and FGM terracotta panel afterwards.

Apr. 21, 2011, the first terracotta panel of LOPO got its start, declaring that the innovation ability of LOPO in terracotta curtain wall is heading towards a higher level.

In 2011, LOPO established strategic and cooperative partnership with Gemdale Group, Fangyuan land Holding Co., Ltd., Beijing Huayuan Property Co., Ltd. and Wharf (Wuxi) Real Estate Co., Ltd..

In Aug. 2012, China's first lychee-shaped terracotta facade with self-cleaning function was produced in Changtai production base of LOPO. Now LOPO has become the largest professional producer for terracotta building products in China.

In Nov. 2012, the world's first piece of multifunctional ground heating floor paver was produced in Changtai factory of LOPO and successfully applied for the patent.

In 2012, LOPO established strategic and cooperative partnership with Shenzhen Li Cheng Real Estate Consultant Co., Ltd, and CITIC Real Estate Co., Ltd. So far LOPO has established long-term cooperative partnership with over 20 well-known real estate enterprises such as Longhu, Poly, China Resources etc.

In 2013, LOPO terracotta facade panels factory expanded new production plants and production lines.

## 乐普制陶 (公司发展史)

2002年：乐普艺术陶瓷有限公司在福建省南安市官桥镇塘上工业区启动奠基仪式，这一神圣的时刻，不仅为乐普公司后来发展成为全国最大的研发、生产、销售一体化的劈开砖专业性企业，成为国内最具竞争实力的粘土质劈开砖生产经营基地，奠定了基础，同时还是开启乐普公司辉煌发展史的新开端。

2003年4月22日：乐普公司第一片挤压成型陶土砖问世了，这是包含了所有乐普人辛勤汗水和智慧的结晶。挤压成型陶土砖，选用优质粘土原料，经过真空挤压和隧道窑高温烧制，造就“十年不新，百年不旧”的独特韵味。

2003年底，乐普公司的文化石厂落成，意味着乐普将开始涉及文化石类型产品的生产。新产品类型的研发、创新，为建筑师和开发商提供了多元化和个性化的选择。2004年艺术文化石产品，问世了。艺术文化石，具有成千上万种特殊形状规格及五彩缤纷的色彩，色泽纹路能保持自然原始的风貌，能将石材质感的内涵与艺术性展露无遗，符合人们崇尚自然，回归自然的文化理念。

2004年：乐普公司首片窑变陶土砖诞生了。窑变陶土砖采用独特工艺配方，通过窑温变化，使用还原技术，烧制出独特的窑变效果，备受国内外知名地产商的青睐。

2004年：手磨陶土砖，绚丽耀世。这款砖为乐普公司独创产品。此款砖的创作灵感来源于厦门鼓浪屿的沙滩。纯手工打磨，高压风蚀，外加岩面、粘土面、流沙面，等细致手工工艺处理，水蚀的自然面流露出历史悠久的年代感，色彩古朴怀旧，更具有“十年不新，百年不旧”的神韵。

2005年：乐普公司第一片火焰窑变陶土砖，炫丽绽放。此款砖经高温烧成，具有良好的质感。色泽自然，炫丽。在新技术工艺下，还原粘土本色，返璞归真，更具有自然性。

2006年：乐普金属窑变砖，荣誉上市。此款砖为乐普公司首创，堪称国内第一。金属劈开砖稳重大气，摒弃了金属粗硬的感觉，融入了丰富色彩的高雅金属质感，开创了陶土砖的新时尚。

2008年：乐普发展成为国内最大陶土砖生产基地。拥有三条国内最先进的劈开砖生产线和国际先进水平的全自动温控隧道窑，年产粘土劈开砖450万平方米，艺术文化石60万平方米。

2009年：全国第一片纯手工陶土砖问世，纯手工的打造，回归原始的制作，用最自然，最本真的原貌，来征服世人的心灵，回归自然，返璞归真！

2009年：乐普启动陶板厂奠基仪式，占地面积达320亩，表明了乐普公司在传承的基础上，不断研发创新，尝试新类型产品的生产，完善自我，希望用富有别具一格，独特魅力的陶板，屹立在陶板行业领域的前沿。

2009年：乐普公司与著名的房地产企业——万科企业股份有限公司，建立战略合作伙伴关系。

2010年：乐普公司先后与金融街控股股份有限公司、深圳招商房地产有限公司建立战略合作伙伴关系。

2011年：乐普公司收购福建房更美陶板制造有限公司，公司旗下拥有两大品牌“乐普”和“房更美”。

2011年4月21日：乐普公司第一片陶板成功问世。这象征着乐普公司在陶土幕墙产品方面的研发和创新，迈向一个更高的发展领域。

2011年：乐普公司先后与金地(集团)股份有限公司、方圆地产控股有限公司、北京市华远置业有限公司、九龙仓(无锡)置业有限公司建立战略合作伙伴关系。

2012年8月：中国第一片带自洁功能的荔枝面状陶板，在福建乐普陶板制造有限公司问世。至此，乐普公司已成为全国最大的建筑陶土制品专业制造商。

2012年11月：世界第一块陶瓷地暖多功能地板砖，在福建乐普陶板制造有限公司问世，并已成功申请了发明专利。

2012年：乐普公司又先后与深圳市里城地产顾问有限公司、中信房地产股份有限公司建立战略合作伙伴关系。同时，迄今为止，乐普也已经和龙湖、保利、华润等近二十家知名地产商建立了长期合作伙伴关系。

2013年：乐普陶板工厂扩建新的生产车间和新的生产流水线。

# PROFESSIONAL 專業

专注于陶土品制造数十年的经验，传承精益求精的专业态度，我们不断开拓与创新，为传统的陶注入新的生命力，赋予艺术的活力

With a decade of our experience in terracotta, we have been continuously creating and developing to energize our products.



陶土



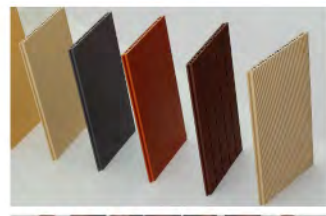
陶土拉毛砖



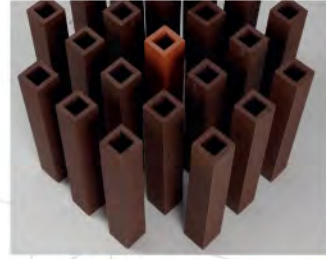
陶土密变砖



陶土砌体砖



陶土板



陶土百叶



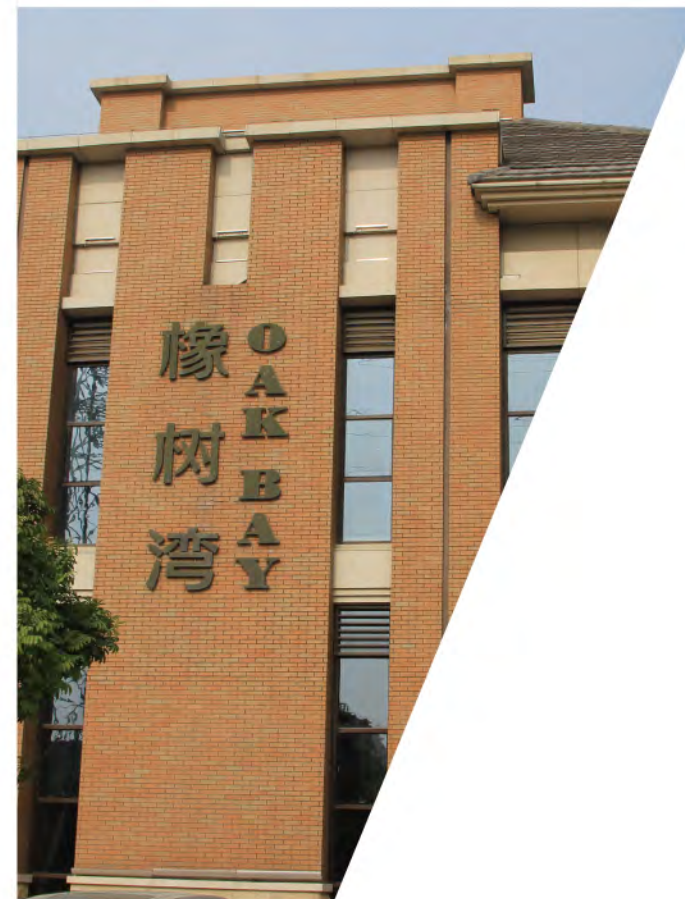
陶土瓦



进口真空挤压成型机  
Imported molding machines of vacuum extrusion



北京萬科新裏程



# HIGH QUALITY 品質

我们不仅追求产品的品质，追求服务的品质，我们更追求包容极致的做人品质.....

We have been dedicating to the quality of our product, which is also the principle of our life.

以品质，赢信任。乐普现已和万科、华润等合作伙伴，在全国各大城市，共同缔造了许多精品工程。

We take trust for quality, LOPO now has created many excellent projects in some major cities with partners such as Vanke and China Resources and so on.



## STRONG TEAM 團隊

团队是企业发展的基础和核心，经营团队、管理团队、研发团队、服务团队.....专业、用心和学习是我们团队的目标和态度.....

Team is the foundation and core of our company. We have a strong team of management, research & development and service. Being excellent is our goal and attitude.....

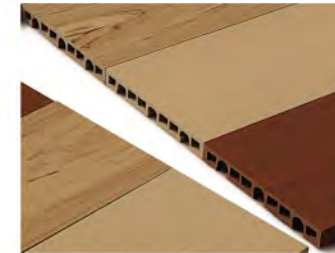


## COMMITMENT 責任

我们承担着每个人共同发展的责任，企业发展的责任，更承载着环保与社会责任。我们将不断赋予产品更高的节能环保功能，更为创造陶·环境·人的和谐发展而努力....

We are committed not only to the development of our company but also the responsibility of our society and environment. We will put our greatest effort to harmonize our mutual home with green products.....

>> 推出各种环保节能型产品  
地暖砖



>> 乐普始终坚持“为客户实现价值”的理念，为客户提供保证质量的产品和专业服务人员。



>> 乐普始终坚持“为员工创造成长”的理念，不断提高中的员工生活区为员工打造“家”的环境。

>> 乐普以环保为己任，不断减排减废，生产过程中碳排放量减少了50%，实现废水零排放。







01



02



03



04



05



06



07

01 拥有428组火焰烧嘴,国内最长(260米)辊道窑  
Domestic longest roller kiln (260-meter) with 428 firing units

02 拥有80000m<sup>2</sup>的露天堆料场,天然陶土原料日常储备达30万吨  
80,000square meters open stockyard with the daily reserve of natural clay raw materials amounts to 300,000 tons.

03 建设中的新车间、新生产线  
The new workshops and production lines under construction

04 半成品原料储存量达15万吨的室内贮料库  
The semi-product indoor repository with storage capacity of 150,000 tons

05 流水线自动完成制品定型与切磨工艺  
The automatic production line with the processing capacity of shaping, cutting and polishing

06 储量达12000吨的成品泥料储存系统  
A batch storage system which can reserve 12,000 tons of prepared clay material

07 进口真空挤压成型机  
Imported molding machines of vacuum extrusion



# 陶土板系列

## TERRACOTTA PANELS

### 什么是陶土板？

陶土板采用天然陶土作为原材料，经过真空挤压成型、低温干燥及1200℃的高温烧制而成。其独特的空腔结构、先进的烧制工艺使其具备保温隔热、隔音降噪的特性，具有绿色环保、无辐射、色泽温和、不会带来光污染，导热系数不到石材的一半，百年后可再次循环使用。起到减少垃圾的作用。陶板具有抗风压和抗震、排水和保护幕墙等功效。同时，陶板的颜色丰富，以其独特的自然质感和自然的色泽成为城市建筑的亮丽风景。

### What is terracotta panel?

Raw material adopted and production process of Terracotta panel is completely environmentally-friendly, even the waste material is recyclable. It features such function as sound absorption, heat insulation, shockproof, windproof, waterproof etc. With special formula and advanced firing process, terracotta panel can meet various requirements from architects by rich colors and natural texture.



樂普陶板工程:北京萬科新裏程  
型号 F301870 规格300x1200x18mm

一座有灵性的建筑，是需要通过自然景观与艺术表现相结合。否则，即使外观再气势恢宏，那也只是一座冷冰冰的建筑物。优雅，古朴，新颖的陶板则以现实的手法，将凝结于建筑中的艺术感展现出来，让建筑充满艺术气息，富有灵气。

金属板的锐利，石材的冰冷，在这个呼唤本真，呼唤和谐，呼唤温暖的年代里，它们显然不再适合社会的需求，古朴而不失华丽，庄重而兼具优雅的陶板，让建筑变得如此的温馨与和谐。置身于当中，心灵可以澄净，思想可以飞扬。

成就伟大的建筑，需要富有生机，具备人文关怀，能与大自然和谐。天然的取材，低碳环保，温润的色泽，平凡中绽放着优雅，素雅中蕴藏着内敛，不经意间，展露着无限的建筑生命力。

坚实的质地、平整美观的外表，独有的人文情怀，由外而内的吸引，简洁而气势不凡，雄浑而不失婉约，刚柔并济的中庸之道，让建筑散发着优雅谦逊的人文气息。

粗糙与细致，菱形与线条，不拘泥于常规，不遵循于平凡，集合个性与特色于一身。用自己独特的魅力，诠释建筑艺术之美，陶板本身所具有的大气，睿智，彰显建筑之气质。

An intelligent architecture needs to combine natural landscape and art. Otherwise, even if the appearance is grand, it is only a cold architecture. Elegant, simple, unsophisticated and novel terracotta panel reveals the art in the architecture in realistic way to fill it with artistic sense and anima.

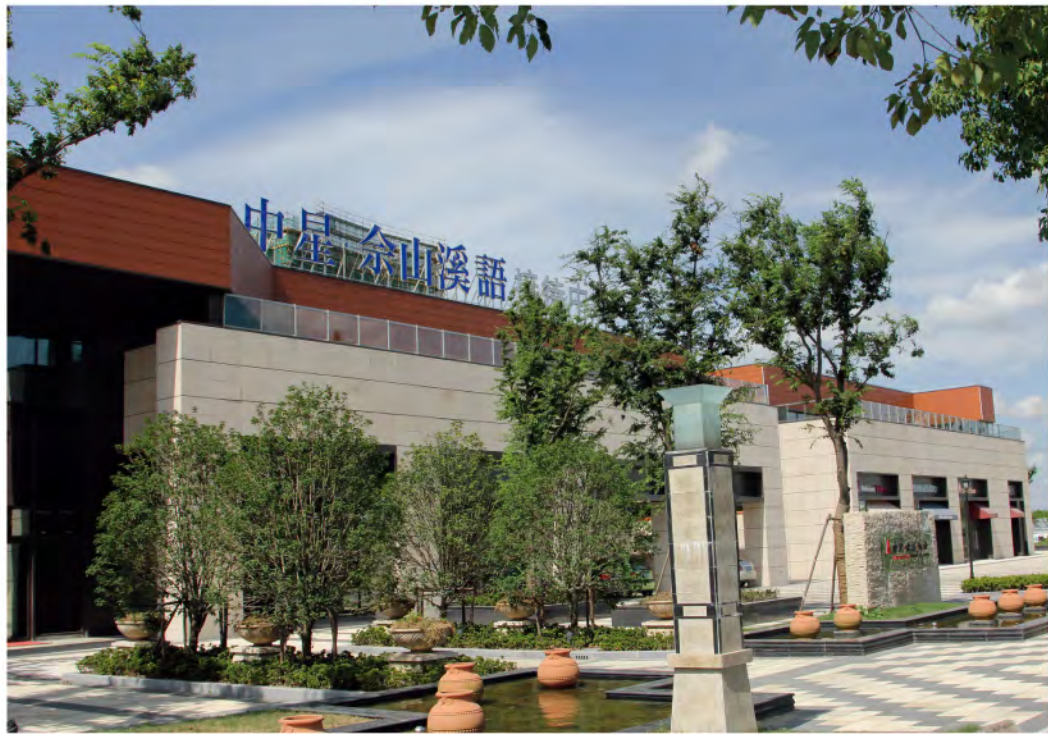
The sharp metal plate and cold stone can no longer meet the requirements of the society in this times calling for nature, harmony and warmth. The terracotta panel is simple, unsophisticated but gorgeous, solemn and elegant, making architectures warm and harmonious. Placing ourselves in it, hearts can be cleared and mind can fly.

The achievement of great architectures requires vitality, humanistic care and harmony with nature. Natural materials are environmental with low-carbon. Mild color indicates elegance in common, contains connotation in simplicity and grace and exudes endless architectural vitality.

Terracotta panel has hard texture, neat and beautiful appearance, unique humanistic feelings and attraction from outside to inside. It is simple but grand, vigorous but restrained and couples hardness and softness, making architectures radiate human air of elegance and humbleness.

The roughness & delicateness and diamonds & lines are not limited by routine, don't comply with commonness and combine individuality and characteristics. Terracotta panel demonstrates the beauty of architectural art with its unique glamour and manifests the height of architectural temperament with its generousness and smartness.





樂普陶板工程:上海佘山溪語  
 型号 F301868 规格300x900x18mm



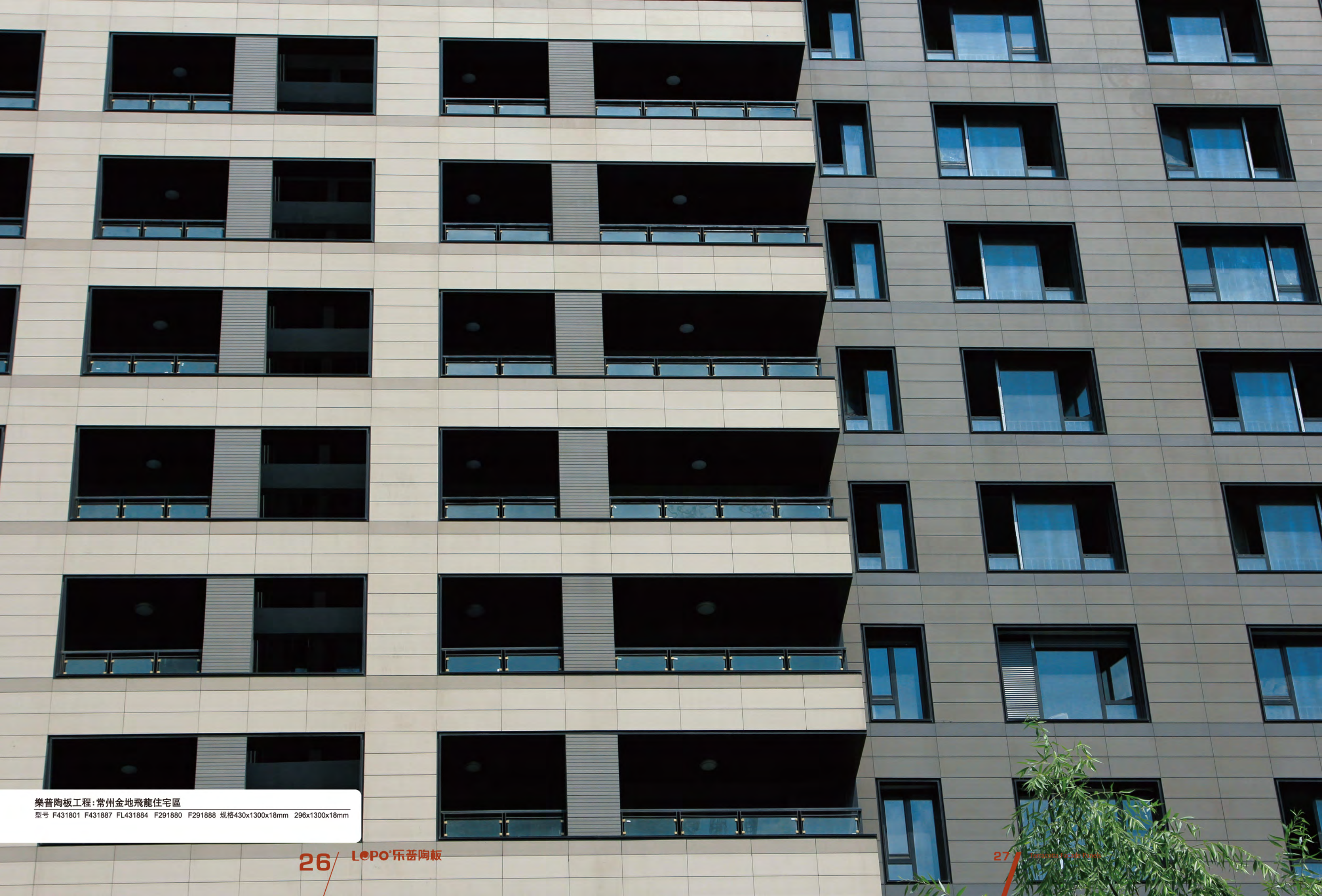
樂普陶板工程:沈陽華強城一期  
 型号 F4518001/F4518235/F4518779 规格450x900x18mm



24/



樂普陶板工程:平潭市政改造工程  
型号 F301801 F301826 规格300x900x18mm

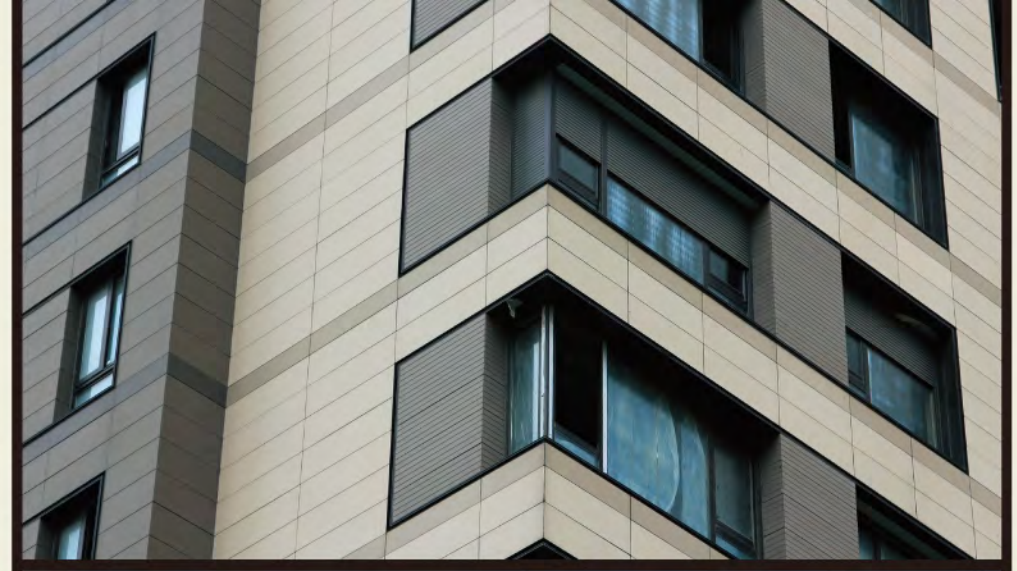


樂普陶板工程：常州金地飛龍住宅區  
型號 F431801 F431887 FL431884 F291880 F291888 規格430x1300x18mm 296x1300x18mm



在建築過程中，建築師創造出美觀且和諧的建築群，保持了建築高水準的外觀設計。建築採用非常協調的三色設計，由陶板組成，營造出莊嚴的形象。

During the process of construction, the architects created an attractive and harmonious building complex and maintained a high-level exterior design. Through their design, this building has three coordinated colors and consists of terracotta panels. All these elements contribute to its stately image.



樂普陶板工程·常州金地飛龍住宅區  
型号 F431801 F431887 FL431884 F291880 F291888 规格430x1300x18mm 296x1300x18mm



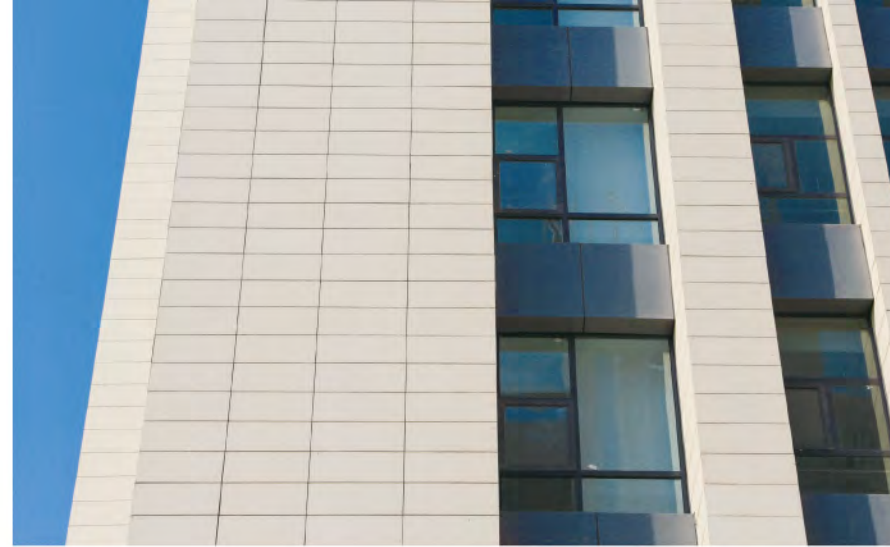


樂普陶板工程：青島招商地產  
 型号 FH4018899 规格400x600x18mm

Architecture is the almanac of the world which is still speaking when songs and legends have been silent.  
 —Gogol, Russian writer

建筑是世界的年鉴，当歌曲和传说已经缄默，它依旧还在诉说！  
 ——俄国作家果戈里





国际商务中心，两座尺寸不同的立方体建筑群。建筑设计以几何造型为基础，并通过尺寸统一的方形窗户实现。这里，陶板有意地采用了两种不同的红色调：尺寸较大的建筑物采用的色调更深一些，立在另一个立方体之后，让其看起来更加深远。

International Business Center consists of two cubic building complexes of different sizes. Geometric shapes are the basis of the architectural design and are maintained right through to the uniform square windows. Two different shades of the red are consciously chosen for the Terracotta panels. With darker tone, the larger cubic building, erecting behind the other cube, seems yet further in the background.

樂普陶板工程：河北交通廳應急指揮中心  
型号 F4018002 规格400x900x18mm

樂普陶板工程：青島經濟開發區育才初級中學  
型号FW6018217 规格 150/250/350/400 × 1000 × 18mm  
型号F3018003 规格 300 × 900 × 18mm





樂普陶板工程:青島經濟開發區育才初級中學  
 型号FW6018217 规格150/250/350/400 × 1000 × 18mm  
 型号F3018003 规格300 × 900 × 18mm



樂普陶板工程：青島經濟開發區育才初級中學  
型号FW6018217 规格 150/250/350/400 × 1000 × 18mm  
型号F3018003 规格 300 × 900 × 18mm



宛如素樸的淺白畫布中，點綴着幾抹深紅，恰似一幅簡單明了的美麗畫卷。樂普陶板溫和美麗的色澤展露無遺，其優良的防污自潔功能，也使得這幅畫卷亮麗如新。

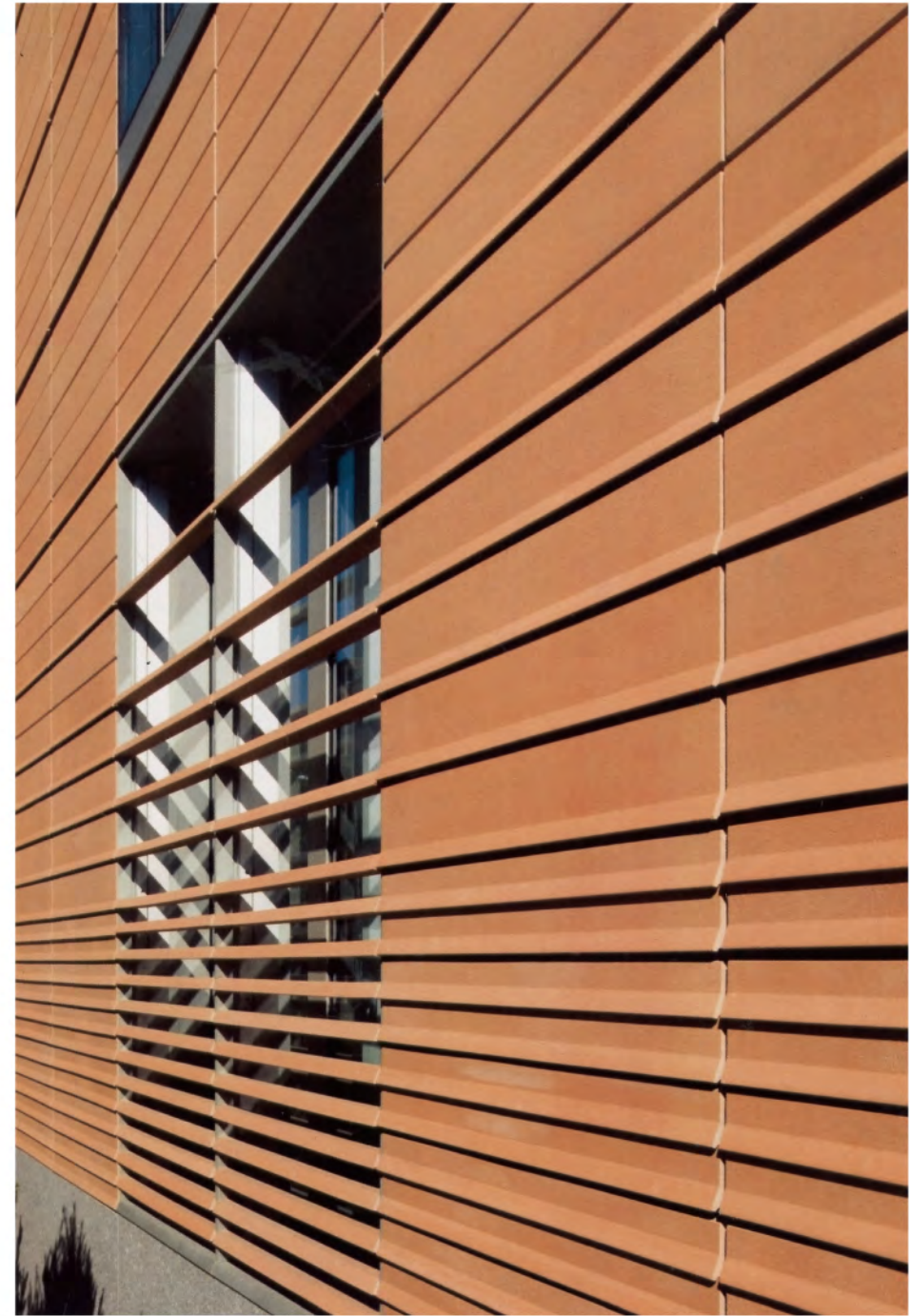
There is a little red ornaments in the middle of a plain white drawing canvas, just like a simple, clear and beautiful scroll picture. The warm and beautiful colors of LOPO terracotta panel are appeared absolutely, and this scroll is clear such as a new thanks to the excellent performance of antifouling and self-cleaning.



樂普陶板工程：晉江第一中學  
型号 F3018003 F4518003 F3018635 F4518635 规格300/450x900x18mm



## 陶·校园文化的积淀



玻璃和红棕色的陶板是哈佛大学校园新建筑外墙的主要材料。特制的陶板系统拥有结构简单的表面和旋转的截面造型。特别设计的型材应用使得外墙特点突出，并产生了迷人的光影效果。

Glass and red-brown terracotta are the predominant facade materials of the new university building in Harvard. A special System with a lightly structured surface and rotational cross-section shape, produced as a special profile, lends the facade its character, and creates fascinating light and shade effects in sunlight.



樂普陶板工程：廈門大學翔安校區  
型號 FR632 規格 120 × 300 × 12mm

LEPO 乐普陶板 45 Terracotta Facade Panels





樂普陶板工程：廈門大學翔安校區  
型号 FR632 規格 120 × 300 × 12mm



樂普陶板工程:韓國新丘大學  
型号 F301869 规格300x1200x18mm



樂普陶板工程:韩国一日帝强占纪念馆  
型号 FH3024884 规格 300 × 1196 × 24mm





樂普陶板工程:韓國新丘大學

型号 T505064 F301864 规格50x50x1215mm 300x1215x18mm

In every building, I try to study something such as light, sunshine, ventilation, scenery, refuge, road and safety. Every building has something to help establish vocabularies.

在每一栋建筑中,我尽力去研究一些东西,比如光线、阳光、通风、景色、避难处、道路、安全等等。每一建筑都有帮助建立语汇的东西。  
——莫科特





樂普陶板工程·福州宏匯·蝶泉灣

型号 FG301876 FG301889 FG501877 规格300x900x18mm 500x900x18mm



**樂普陶板工程:福州宏匯·蝶泉灣**

型号 FG301876 FG301889 FG501877 规格300x900x18mm 500x900x18mm

建筑的目标在创造完美，也就是创造最美的效益。但更有力的说法是：建筑留存下来因为它是艺术，因为它超越实用。建筑设计师的激情可以从顽石中创造出奇迹！

—柯布西耶

Architecture aims at creating perfection, that is, creating most beautiful benefit. What's more powerful is that architecture survives as it is art and surpasses utility. The passion of architects can create miracles from hard rocks!

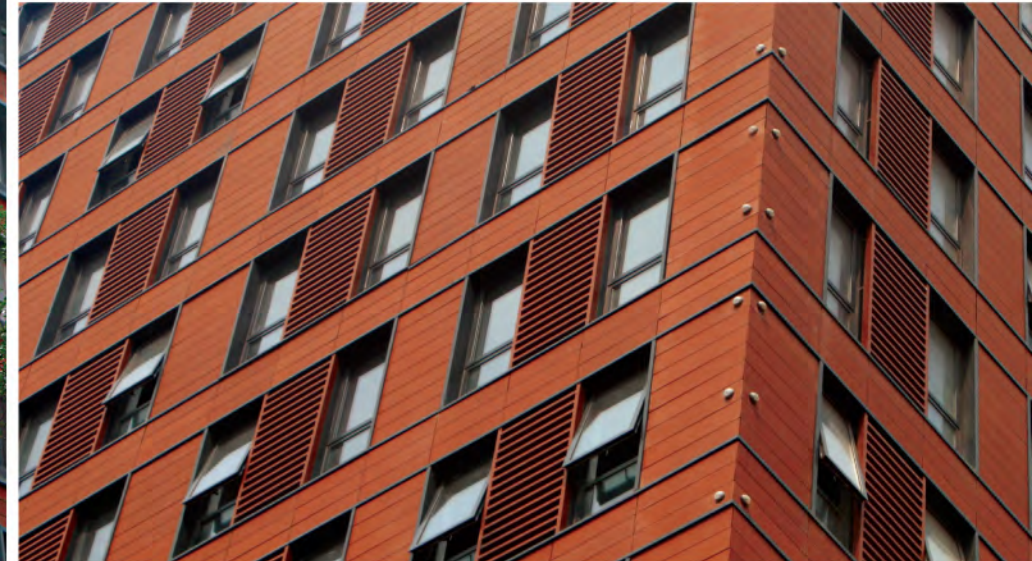
— Le Corbusier



樂普陶板工程·淄博市華光陶瓷辦公大樓  
型号 F4518773 F3018773 规格450x1000x18mm 300x1000x18mm

安居是凡人在大地上的存在方式。  
建筑并不仅仅是通向安居的一种手段和道路——建筑本身就是安居。  
我们不安居，因为我们已经在建筑。  
——海德格尔

Setting up a home is the method that human living in earth.  
is not only a kind of means and road to set up a home - a architecture is a home.  
We are not setting up a home, because we have been construct the architectures.  
----- Heidegger



在灯红酒绿，物欲横流的钢筋城市森林中，能够保存最初淳朴的本真，返璞归真，是一种超乎平凡的坦然，是一种无畏的沉淀。乐普艺术便是在自然的灵性和人性交融中，彰显着它的神奇、美丽，绽放着悠远内涵文化艺术生命。

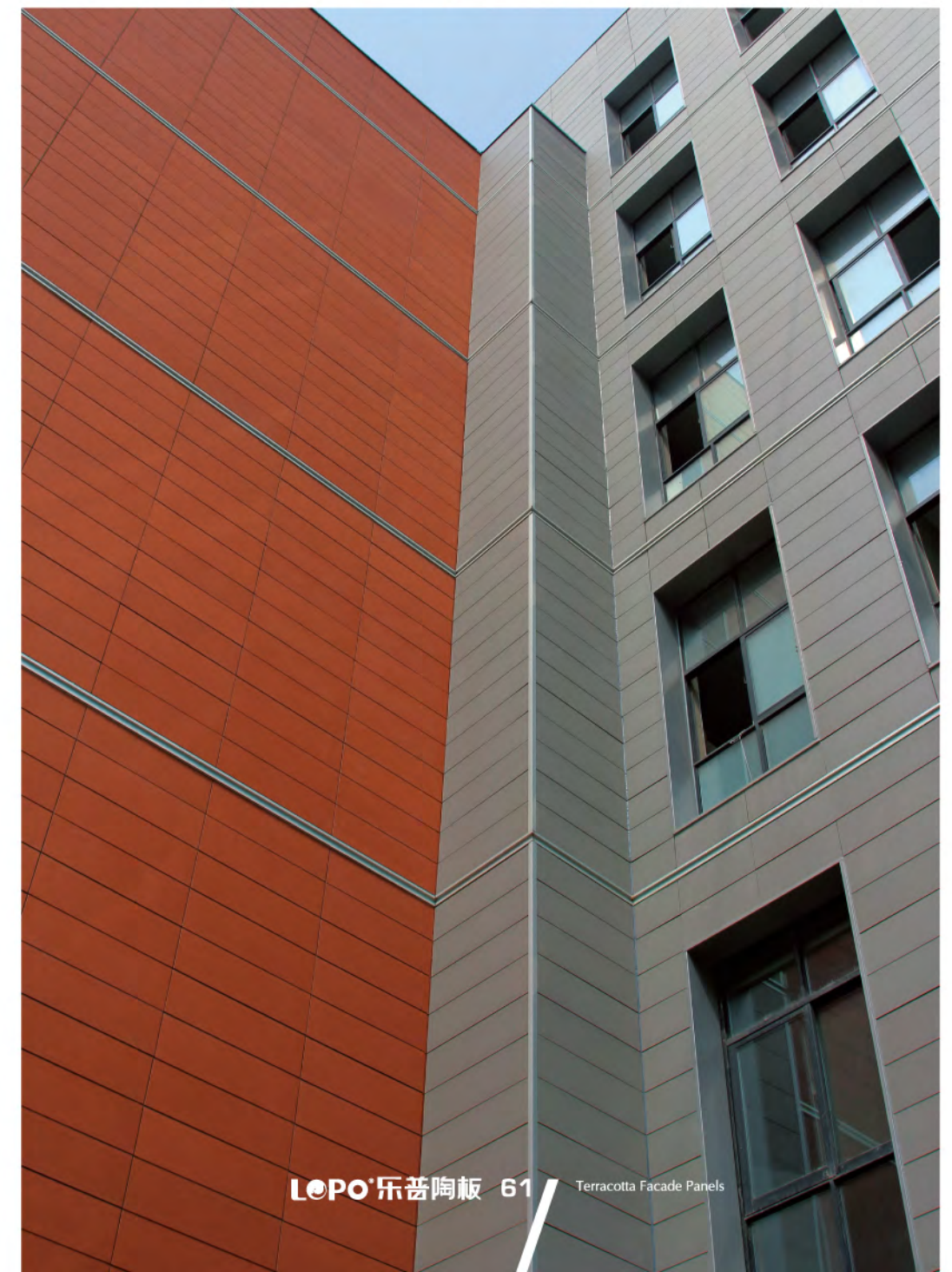
返璞归真，再现自然，是让心灵、情操、境界得到升华和净化。“结庐在人境，而无车马喧。问君何能尔，心远地自偏。”陶板守护的是在繁华之外我们梦想的宁静居所，如果说建筑是凝固的音乐，那么陶板就是凝固的音符，每一片陶板都是一个曲调，乐普陶瓷它以无声的方式演绎着一曲对大自然、对生活、对生命、对美的乐章。

In the dazzling and materialistic city forest with reinforced bar, maintaining the purity and recovering the simplicity and nature is the transcendental peace and unappalled deposition. Lopo Art Ceramics manifests its magic and beauty in the blending of natural spirituality and humanity and deduces the life of long-standing connotation, culture and art.

Recovering the simplicity and nature will reproduce the nature and sublime and purify the heart, sentiment and realm. "Living in the society, I am not disturbed by the noise of outer world. The reason is that if you are free from vulgarity, you will feel beyond the noise world". The terracotta panel guards the peaceful residence outside the prosperity for us. It is the concretionary note. Every piece of terracotta panel is a melody. Lopo Art Ceramics deduces movements towards the nature, living, life and beauty in silent way.



樂普陶板工程·鄭州臺灣科技園  
型号 F301869/F3018883 規格300x900x18mm







建築是用結構表達觀點的科學之藝術  
建築是人的想象力駕馭材料和科技的凱歌  
建築是體現在他自己的世界中的自我意識，有什麼樣的人，就有什麼樣的建築  
——賴特

Architecture is a scientific art expressing opinions with structures  
Architecture is a song of triumph in which human imagination rules materials and science and technology  
Architecture reflects his self-consciousness in his own world. He creates his own architecture.  
—Wright





樂普陶板工程：山東威海雨潤北海灣  
 型号 F3018636 規格300x600x18mm



樂普陶板工程：廣東惠州萬林湖  
 型号 L3013636 規格300x600x13mm



樂普陶板工程：山東威海雨潤北海灣  
 型号 F3018636 規格300x600x18mm

簡約但不冷漠，普通而不乏味。占據主導地位的暖紅色調外牆陶板與玻璃窗戶冷色系形成了鮮明的對比。陶板很好地貼合了建築的外部造型、半徑和圍欄，處處體現了對細節的高要求。

Clear without being clinical, unspectacular but never boring. The predominantly warm red tone of the ceramic cladding contrasts effectively with the cool blue and green hues of the windows, glass components and roof construction. The profiled panels perfectly follow the external shapes of the building, the radiuses and the railings, displaying a masterful attention to detail.



樂普陶板工程：景德鎮國際陶瓷藝術文化交流中心  
 型号 F301869 規格300x900x18mm



樂普陶板工程：泉州晉江機場  
 型号 F301869 規格300x600x18mm



樂普陶板工程：雲南煙科所大樓  
 型号 F301876 規格300x1000x18mm



樂普陶板工程: 昆玉高速中石化余家海服務區  
 型号 F3018232 FG3018232 FR3018636 規格300x1000x18mm



平面板与槽面板建筑实景 Natural Surfaced to Grooved-surfaced Panel



樂普陶板工程: 昆明經典雙城  
 型号 F3018637 F3018886 FH3018230 F3018230 規格300x1000/1200x18mm



樂普陶板工程: 雲南個舊市金水湖畔  
 型号 F3018772 規格300x900/1200x18mm  
 型号 F4518772 規格450x1200x18mm  
 型号 F5018772 規格500x1200x18mm





樂普陶板工程：紅雲紅河集團辦公大樓  
型号 F3030899 規格300x1200x30mm

国际商务中心，两座尺寸不同的立方体建筑群。建筑设计以几何造型为基础，并通过尺寸统一的方形窗户实现。这里，陶板有意地采用了两种不同的红色调：尺寸较大的建筑物采用的色调更深一些，立在另一个立方体之后，让其看起来更加深远。  
International Business Center consists of two cubic building complexes of different sizes. Geometric shapes are the basis of the architectural design and are maintained right through to the uniform square windows. Two different shades of the red are consciously chosen for the Terracotta panels. With darker tone, the larger cubic building, erecting behind the other cube, seems yet further in the background.



When we think of any important civilization, we have a habit, to stand for it with a grand architectural  
—— contemporary art historian Jackson

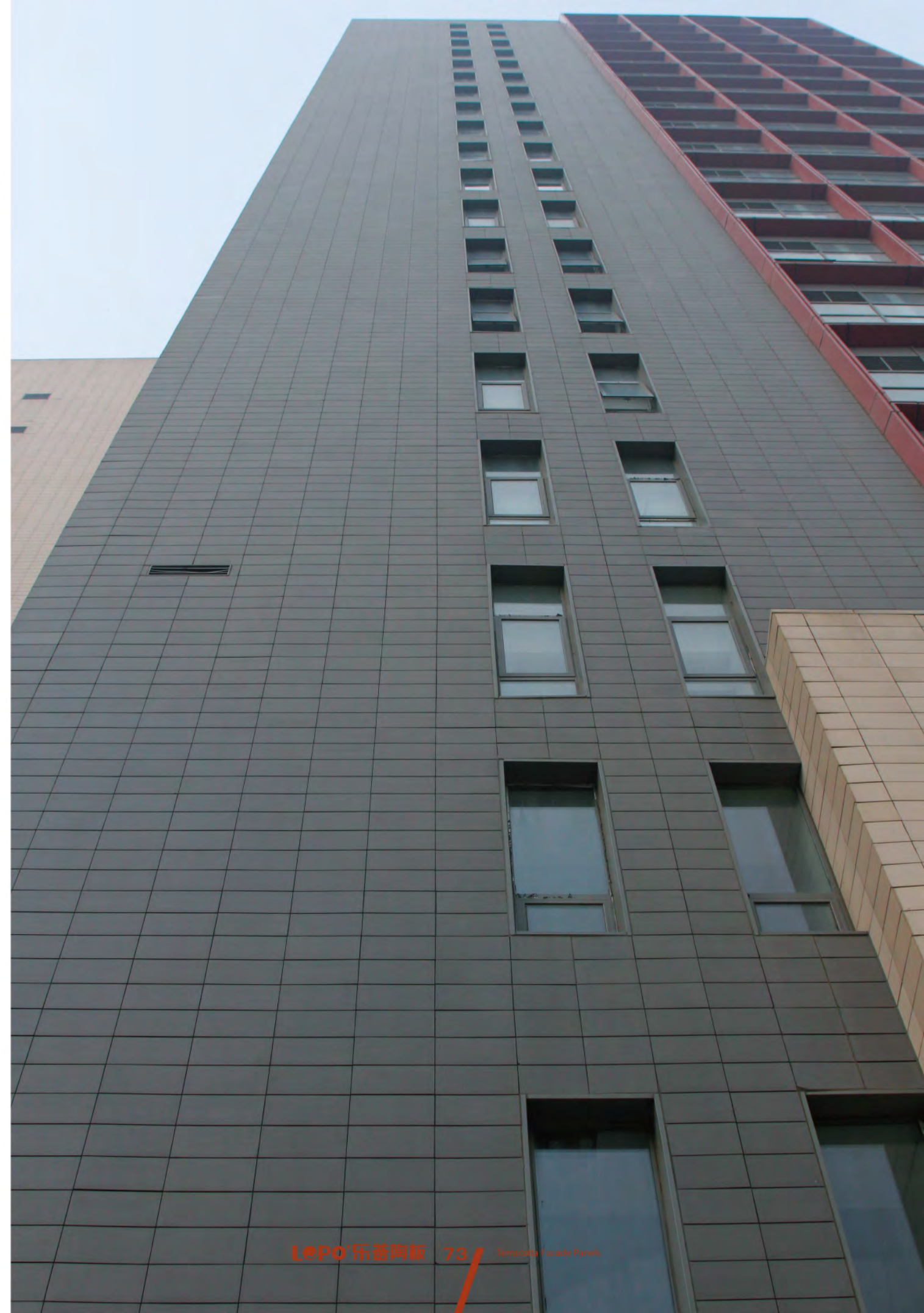
当我们想起任何一种重要的文明的时候，我们有一种习惯，就是用伟大的建筑来代表它！  
——当代艺术史家杰克逊



樂普陶板工程：成都紡織科學院外立面改造  
型号 F3018886 規格300x1000x18mm



樂普陶板工程：廈門聖果院商業中心  
型号 F6030899 規格600x1200x30mm





# 乐普陶板部分工程案例

## lopo terracotta panel

### I PROJECT CASUS

#### 华北地区/东北地区

- 北京 北京万科新里程
- 北京 中科院物理所
- 北京 中国建筑研究院
- 北京 北京师范大学幼儿园
- 北京 北京大兴生物医药基地
- 北京 北京安国水道自控工程技术有限公司办公楼
- 北京 北京水利局
- 北京 北京新盛工业园
- 北京 北京旱河路外墙项目
- 北京 北京楚记陶瓷城大门
- 天津 天津远洋风景外墙小陶板项目
- 河北 河北交通厅应急指挥中心
- 河北 邢台现代城
- 河北 石家庄北城大厦
- 内蒙古 亲亲尚城
- 内蒙古 和谐园
- 内蒙古 千家和
- 内蒙古 金泰花园
- 辽宁 沈阳华强城一期
- 辽宁 大连万科蓝山项目商业街
- 辽宁 大连小窑湾
- 吉林 长春宇都和源
- 黑龙江 鸡西体育馆
- 黑龙江 哈尔滨八五八农场职工文化活动中心

#### 西北地区

- 宁夏 西夏王酒业有限公司
- 陕西 西安外事学院
- 青海 西宁时代广场
- 青海 海晏县文体中心
- 新疆 兵团农六师军户农场文化活动中心
- 甘肃 甘肃陇东学院

#### 华南地区

- 广东 东莞市麻涌镇河西街城市改造工程
- 广东 坪石火车站
- 广东 增城科技博物馆
- 广东 中山国际花城
- 广东 惠州鹏基万林湖
- 广东 佛山乐居泳池
- 广东 深圳联通大厦
- 广东 广州颐年园
- 海南 海南文昌青少年活动中心
- 海南 昌瑞铭城

#### 西南地区

- 四川 华润置地东湖商业项目
- 四川 西部鞋都
- 四川 南充市人民路立面整治工程
- 四川 双流县新建党校宿舍楼及培训楼
- 四川 中石油成都压缩机厂
- 四川 西物科技办公楼立面改造
- 四川 成都蜀都大道西段改造-成都银行外墙
- 四川 蜀都大道文物总店和中山医院改造
- 四川 紫晶商务酒店
- 四川 成都齐力大厦
- 四川 泸州集成大厦改造
- 四川 成都市第七中学
- 四川 成都台双医院外墙改造
- 四川 内江市平安大楼
- 四川 内江市东兴车站
- 四川 内江市地税局
- 重庆 石柱县黄水镇文化中心
- 重庆 巴南林语溪售楼部
- 重庆 重庆保利爱尚里
- 云南 云南通海县政府办公大楼
- 云南 经典双城群楼幕墙攻城
- 云南 中国烟科院
- 云南 红云红河集团办公大楼
- 云南 昆玉高速中石化余家海服务区
- 云南 昆明云天华禾酒店
- 云南 玉溪何林书香府
- 云南 通海城市名钻
- 云南 西双版纳景洪烟草公司
- 云南 泸西锦绣花园
- 云南 个旧市金水湖畔
- 云南 曲靖创森
- 云南 陆良盛邦新城
- 贵州 竹园清水湾
- 贵州 贵阳渔安新城
- 贵州 遵义中建幸福城

#### 港澳台/国外

- 香港 香港水务署办公楼
- 香港 香港浸会大学图书馆
- 日本 神奈川JA Kanagawa办公大楼
- 韩国 韩国新丘大学教学楼
- 韩国 韩国首尔大学医学院
- 韩国 韩国(日帝强占纪念馆)
- 韩国 韩国首尔周氏医院
- 科威特 KUWAIT-AI MASSALEH COMPLEX
- 哈萨克斯坦 哈萨克斯坦Alexeys 商务中心
- 新加坡 新加坡 LW 仓储中心

#### 华东地区

- 上海 上海联强国际大厦
- 上海 上海衡山酒店
- 上海 上海诺地乐办公大楼
- 上海 一品漫城
- 上海 中星·佘山溪语
- 上海 上海青龙古寺
- 江苏 常州金地集团飞龙2#地块住宅区
- 浙江 苍南县人民来访联合接待中心
- 山东 青岛凤凰岛中学
- 山东 青岛招商中润空港商务花园
- 山东 淄博华光陶瓷科技文化有限公司办公楼
- 山东 威海雨润·星宇华府
- 安徽 马鞍山体育中心
- 江西 中国瓷都-景德镇国际陶瓷艺术文化交流中心
- 江西 南昌市老年大学红谷滩分校
- 福建 福州宏汇·蝶泉湾
- 福建 福州万科大学城
- 福建 福建省高新技术创业服务中心孵化基地二期
- 福建 福州茶园山中心小学
- 福建 三明翡翠城
- 福建 晋江第一中学
- 福建 晋江机场贵宾厅/候机厅
- 福建 闽南建工体育馆
- 福建 平潭市政改造工程
- 福建 厦门大学翔安校区
- 福建 厦门圣果院商业中心
- 福建 厦门嘉庚艺术文化中心

#### 华中地区

- 湖南 长沙高新区信息产业园
- 湖南 长沙黄花机场空港业务中心及配套景观工程
- 湖南 江湾·纯水岸
- 湖南 东怡·南湖大厦
- 湖南 岳阳富兴鹏城营销中心
- 湖南 韶山毛泽东同志纪念馆
- 湖北 武汉第三医院
- 河南 郑州台湾科技园
- 河南 郑州山河宾馆
- .....

# 陶板 TERRACOTTA FACADE PANELS

它以独特的美，为建筑披上一件完美“嫁衣”。它不似金属般的张扬跋扈；不似玻璃般冷若冰霜；也不似石材般深沉威严。它以静静的姿态，慢慢舒展，融入整座建筑，散发独特魅力。触摸之下，那微微起伏的肌肤让您感到无比的亲近；触目之下，温暖柔和的色泽让人感到无比的舒畅。这种由内到外的美，也成就了陶板成为现代建筑幕墙的“新宠儿”。

It by the unique beauty, for building with a perfect wedding. It is not like metal of make public defiant, Not as cold as ice like glass, Don't like stone like deep majesty. It with quiet posture, slow stretches, blend in the entire building, send out unique charm. Touch under, the tiny undulating skin to let you feel matchless to come near, An unhealed under, warm downy colour and lustre lets a person feel matchless and relaxed. This kind of from inside to outside beauty, and accomplished contented board becomes the modern building curtain wall "new pet".



# 小陶板

## SMALL TERRACOTTA PANELS

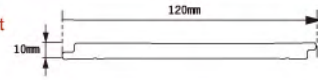
### 湿贴陶板系列

陶质无釉 Natural Clay Without Glaze

注：长度根据要求定制

Note: The length has custom-made according to the request

规格：宽度为：100mm-200mm 厚度为：10mm-15mm



NO: FR231  
SIZE: 120X300X10MM  
小陶板 small terracotta panel



NO: FR231



NO: FR632  
SIZE: 120X300X10MM  
小陶板 small terracotta panel



NO: FR632



NO: FR772  
SIZE: 120X300X10MM  
小陶板 small terracotta panel



NO: FR772

## 干挂陶板系列

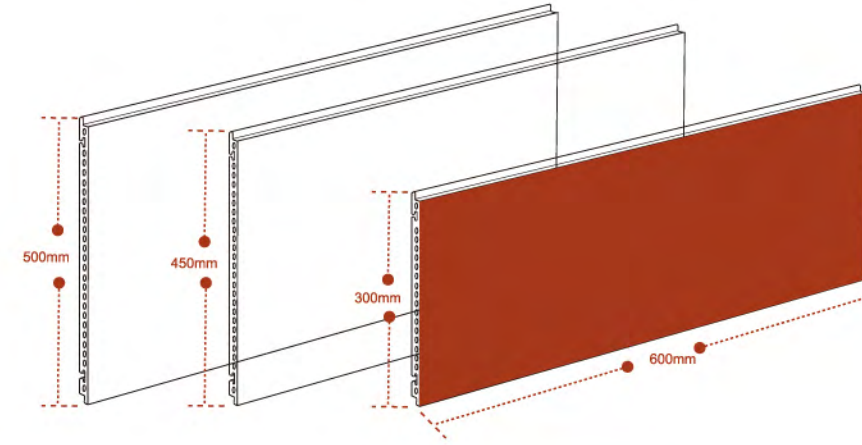
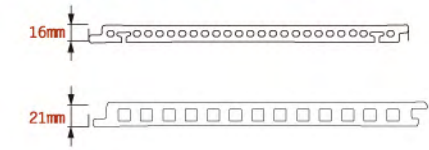
陶质无釉 Natural Clay Without Glaze

注：长度根据要求定制

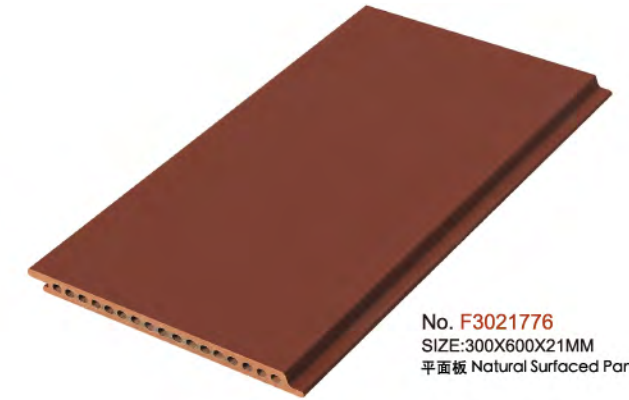
Note: The length has custom-made according to the request

规格：宽度为：150mm-600mm 长度：250mm-1500mm

厚度为：16mm / 21mm



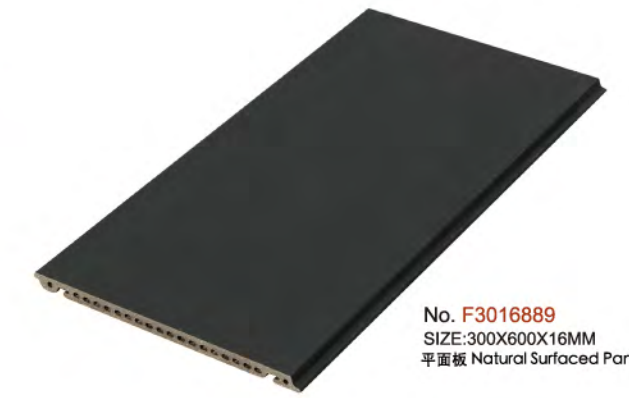
No. F4521634  
SIZE: 450X600X21MM  
平板板 Natural Surfaced Panel



No. F3021776  
SIZE: 300X600X21MM  
平板板 Natural Surfaced Panel



No. F4521637  
SIZE: 450X600X21MM  
平板板 Natural Surfaced Panel



No. F3016889  
SIZE: 300X600X16MM  
平板板 Natural Surfaced Panel

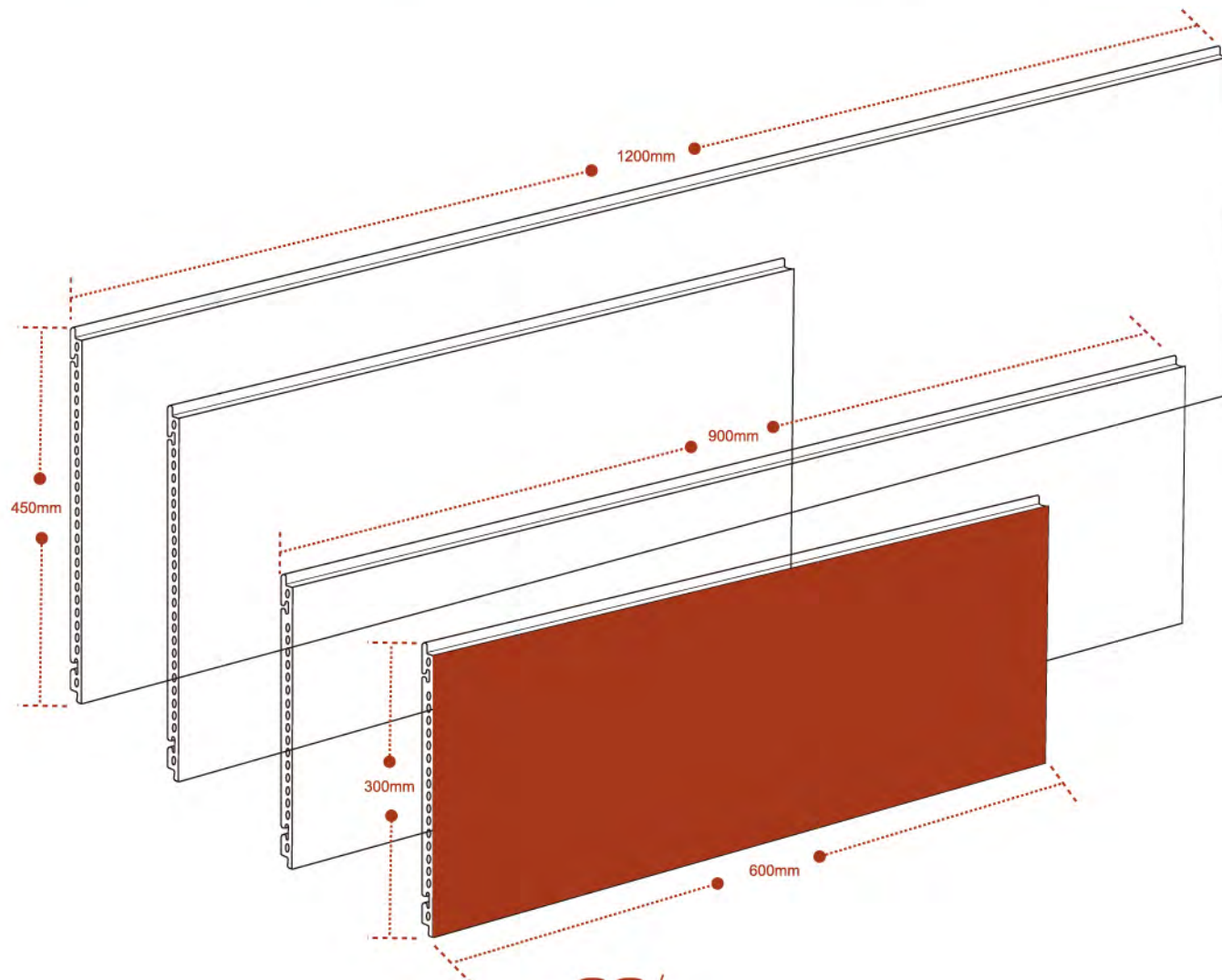
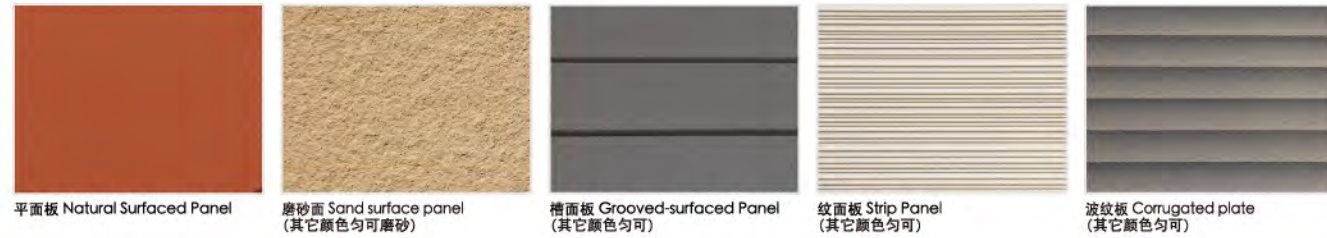
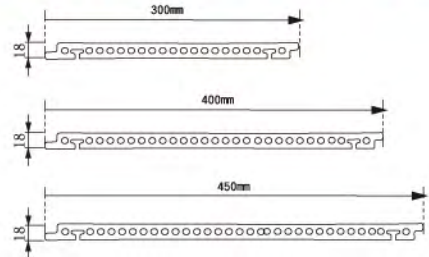
# 干挂陶板系列

陶质无釉 Natural Clay Without Glaze

注：长度根据要求定制

Note: The length has custom-made according to the request

规格：宽度为：150mm-600mm 长度：250mm-1500mm 厚度为：18mm

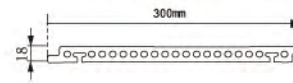


陶质无釉 Natural Clay Without Glaze

注：长度根据要求定制

Note: The length has custom-made according to the request

规格：宽度为：150mm-600mm 长度：250mm-1500mm 厚度为：18mm



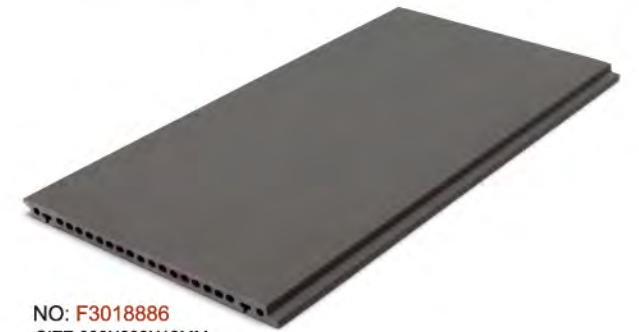
NO: F3018003  
SIZE:300X600X18MM  
平板 Natural Surfaced Panel



NO: F3018883  
SIZE:300X600X18MM  
平板 Natural Surfaced Panel



NO: F3018991  
SIZE:300X600X18MM  
平板 Natural Surfaced Panel



NO: F3018886  
SIZE:300X600X18MM  
平板 Natural Surfaced Panel



NO: F3018230  
SIZE:300X600X18MM  
平板 Natural Surfaced Panel



NO: F3018885  
SIZE:300X600X18MM  
平板 Natural Surfaced Panel



NO: F3018236  
SIZE:300X600X18MM  
平板 Natural Surfaced Panel



NO: F3018899  
SIZE:300X600X18MM  
平板 Natural Surfaced Panel

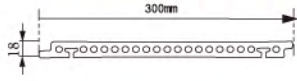
## 干挂陶板系列

陶质无釉 Natural Clay Without Glaze

注: 长度根据要求定制

Note: The length has custom-made according to the request

规格: 宽度为: 150mm-600mm 长度: 250mm-1500mm 厚度为: 18mm



NO: F3018630  
SIZE: 300X600X18MM  
平板板 Natural Surfaced Panel



NO: FH3018576  
SIZE: 300X900X18MM  
磨砂面 SAND SURFACE PANEL



NO: F3018638  
SIZE: 300X600X18MM  
平板板 Natural Surfaced Panel



NO: FH301869  
SIZE: 300X600X18MM  
磨砂面 SAND SURFACE PANEL



NO: F3018773  
SIZE: 300X600X18MM  
平板板 Natural Surfaced Panel



NO: FH301864  
SIZE: 300X600X18MM  
磨砂面 SAND SURFACE PANEL



NO: FH301801  
SIZE: 300X600X18MM  
磨砂面 SAND SURFACE PANEL



NO: FH3018236  
SIZE: 300X600X18MM  
磨砂面 SAND SURFACE PANEL



NO: FX3018012  
SIZE: 300X600X18MM  
纹面板 Strip Panel



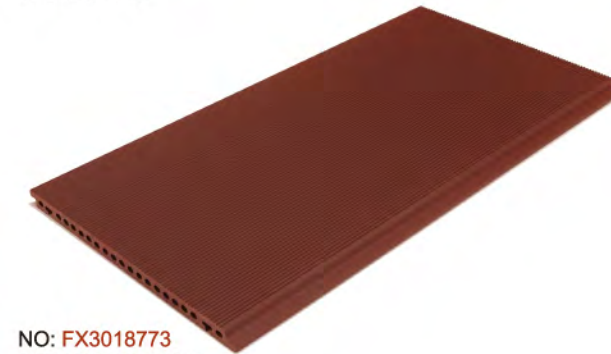
NO: FG301864  
SIZE: 300X600X18MM  
槽面板 Grooved-surfaced Panel



NO: FX301869  
SIZE: 300X600X18MM  
纹面板 Strip Panel



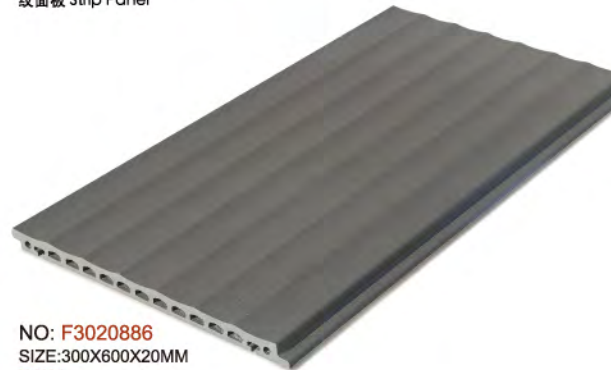
NO: FG301869  
SIZE: 300X600X18MM  
槽面板 Grooved-surfaced Panel



NO: FX3018773  
SIZE: 300X600X18MM  
纹面板 Strip Panel



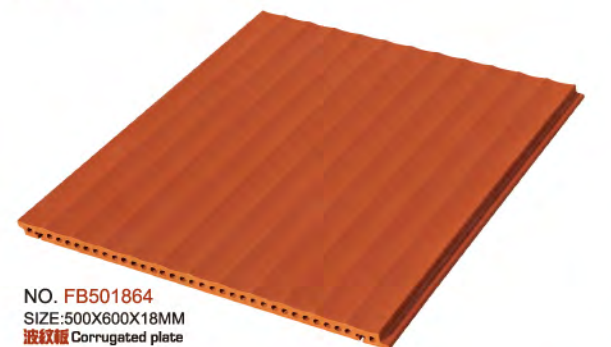
NO: FG301877  
SIZE: 300X600X18MM  
槽面板 Grooved-surfaced Panel



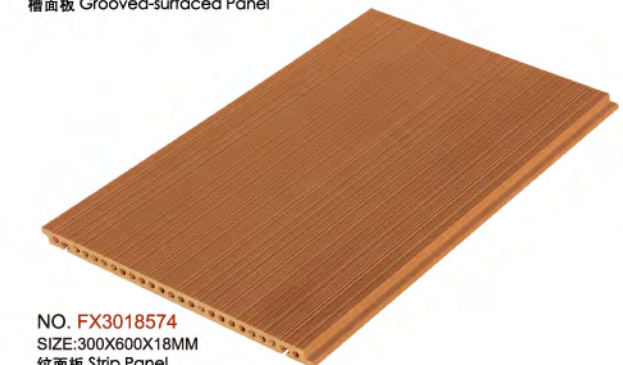
NO: F3020886  
SIZE: 300X600X20MM  
波纹板 Corrugated plate



NO: FG301886  
SIZE: 300X600X18MM  
槽面板 Grooved-surfaced Panel



NO: FB501864  
SIZE: 500X600X18MM  
波纹板 Corrugated plate



NO: FX3018574  
SIZE: 300X600X18MM  
纹面板 Strip Panel

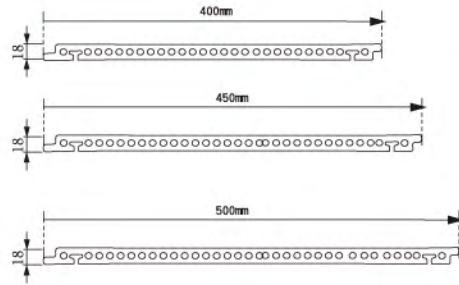
## 干挂陶板系列

陶质无釉 Natural Clay Without Glaze

注：长度根据要求定制

Note: The length has custom-made according to the request

规格：宽度为：150mm-600mm 长度：250mm-1500mm 厚度为：18mm



NO: F4518013  
SIZE:450X600X18MM  
平板 Natural Surfaced Panel



NO: F451876  
SIZE:450X900X18MM  
平板 Natural Surfaced Panel



NO: F451826  
SIZE:450X900X18MM  
平板 Natural Surfaced Panel

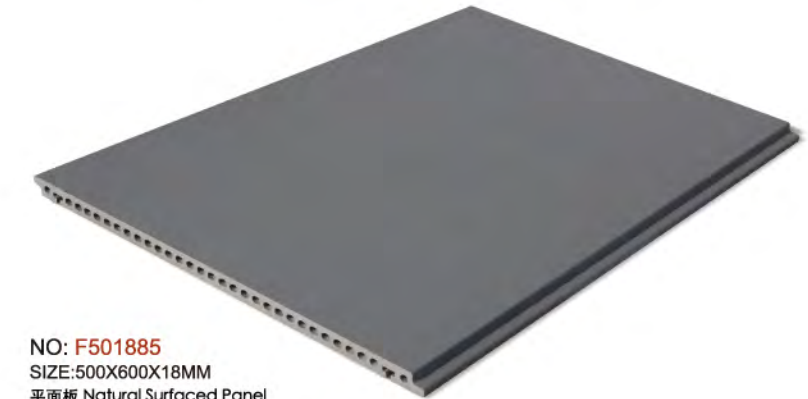


NO: F4518630  
SIZE:450X900X18MM  
平板 Natural Surfaced Panel

LOPO 乐普陶板  
Terracotta Facade Panels



NO: F501801  
SIZE:500X600X18MM  
平板 Natural Surfaced Panel



NO: F501885  
SIZE:500X600X18MM  
平板 Natural Surfaced Panel



NO: FHG5018640  
SIZE:500X600X18MM  
磨砂面 SAND SURFACE PANEL



NO: FG501826  
SIZE:500X900X18MM  
槽面板 Grooved-surfaced Panel

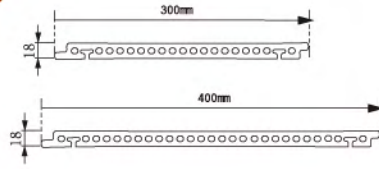


NO: FH401881  
SIZE:400X600X18MM  
磨砂岩面 Natural Surfaced Panel

# 陶板系列 砂岩面

## TERRACOTTA FACADE PANELS WOOD PANEL

陶质无釉 Natural Clay Without Glaze  
 注: 长度根据要求定制  
 Note: The length has custom-made according to the request  
 规格: 宽度为:150mm-600mm 长度:250mm-1500mm 厚度为:18mm



砂岩面 WOOD PANEL  
 NO: FW3018218  
 SIZE:300X600X18MM

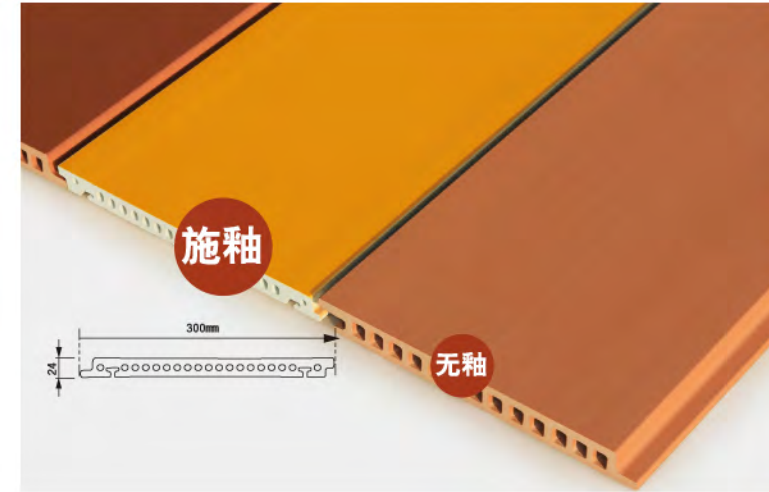
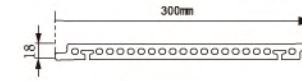


砂岩面 WOOD PANEL  
 NO: FW4018717  
 SIZE:400X600X18MM

# 干挂陶板系列

陶质施釉 Glazing Ceramic

注: 长度根据要求定制  
 Note: The length has custom-made according to the request  
 规格: 宽度为:150mm-600mm 长度:250mm-1500mm 厚度为:18mm-30mm



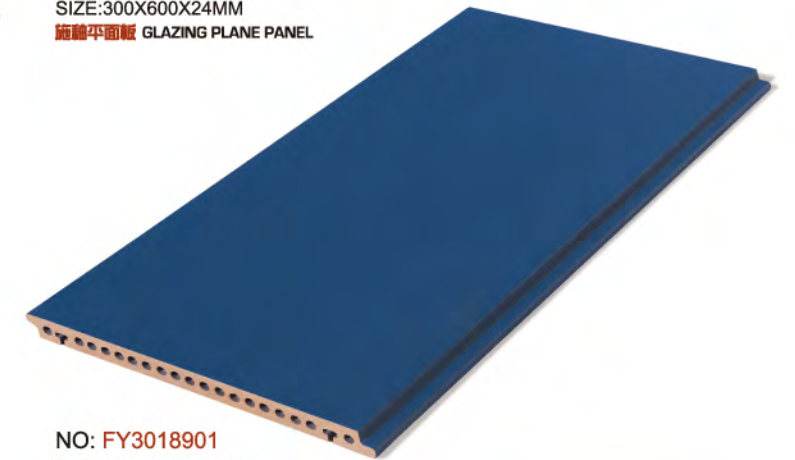
NO: FY3024003  
 SIZE:300X600X24MM  
 施釉平面板 GLAZING PLANE PANEL



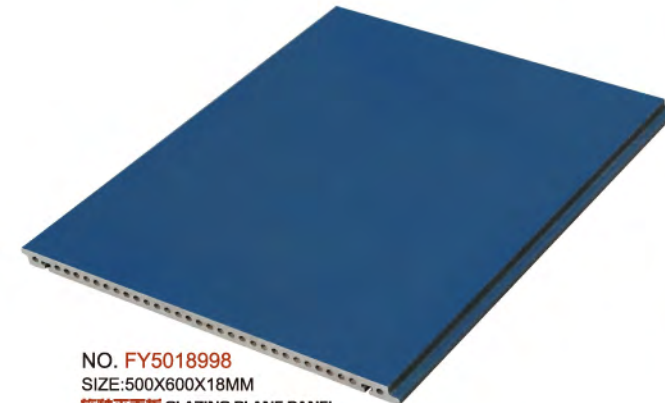
NO: FY3024240  
 SIZE:300X600X24MM  
 施釉平面板 GLAZING PLANE PANEL



NO. FY3018236  
 SIZE:300X600X18MM  
 施釉槽面板 GROOVED-SURFACED PANEL



NO: FY3018901  
 SIZE:300X600X18MM  
 施釉平面板 GLAZING PLANE PANEL



NO. FY5018998  
 SIZE:500X600X18MM  
 施釉平面板 GLAZING PLANE PANEL



NO: FY3018639  
 SIZE:300X600X18MM  
 施釉平面板 GLAZING PLANE PANEL

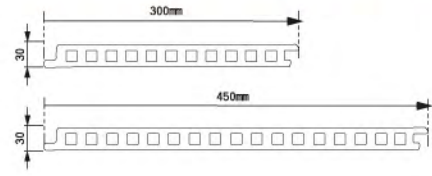
## 干挂陶板系列

陶质无釉 Natural Clay Without Glaze

注: 长度根据要求定制

Note: The length has custom-made according to the request

规格: 宽度为: 150mm-600mm 长度: 250mm-1500mm 厚度为: 30mm



NO: FH303076  
SIZE: 300X600X30MM  
磨砂面 SAND SURFACE PANEL



NO: FX3030238  
SIZE: 300X600X30MM  
纹面板 Strip Panel



NO: FX3030001  
SIZE: 300X600X30MM  
纹面板 Strip Panel

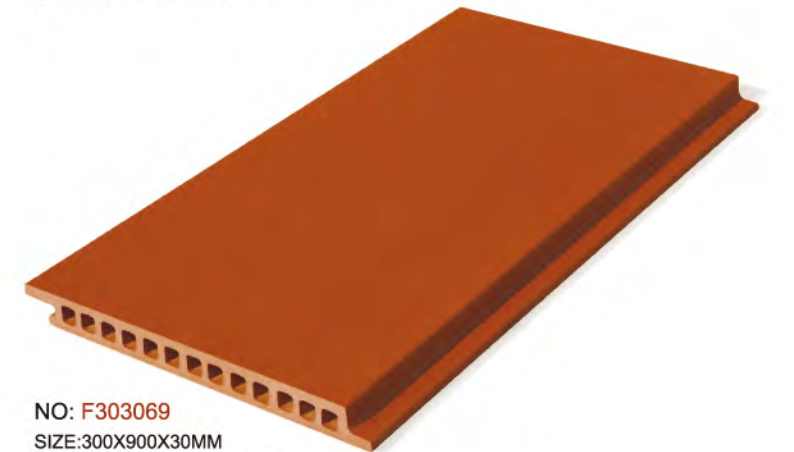


NO: FX3030880  
SIZE: 300X600X30MM  
纹面板 Strip Panel

LOPO 乐普陶板  
Terracotta Facade Panels



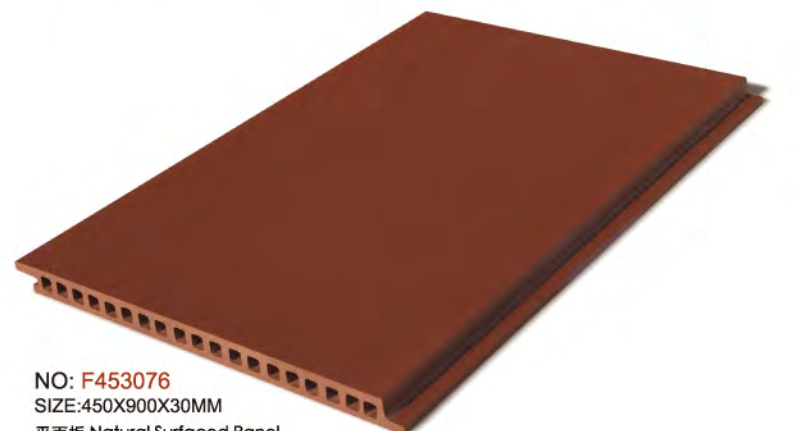
NO: F3030899  
SIZE: 300X900X30MM  
平板 Natural Surfaced Panel



NO: F303069  
SIZE: 300X900X30MM  
平板 Natural Surfaced Panel



NO: FX453064  
SIZE: 450X600X30MM  
纹面板 Strip Panel



NO: F453076  
SIZE: 450X900X30MM  
平板 Natural Surfaced Panel

# Light 轻工陶板

Terracotta Panels

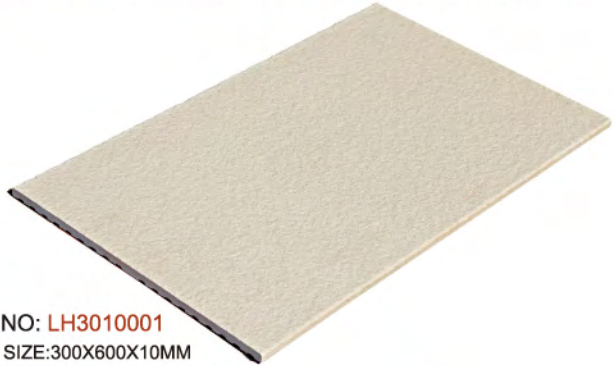
Light is the source of light Light supplies energy Light awakes hidden power

## 湿贴陶板系列

注：长度根据要求定制

Note: The length has custom-made according to the request

规格：宽度为：150mm-600mm 长度：250mm-1500mm 厚度为：10mm-15mm



NO: LH3010001  
SIZE: 300X600X10MM  
磨砂面 SAND SURFACE PANEL



NO: FX301526  
SIZE: 300X600X15MM  
纹面板 Strip Panel



NO: LH3010770  
SIZE: 300X600X10MM  
磨砂面 SAND SURFACE PANEL



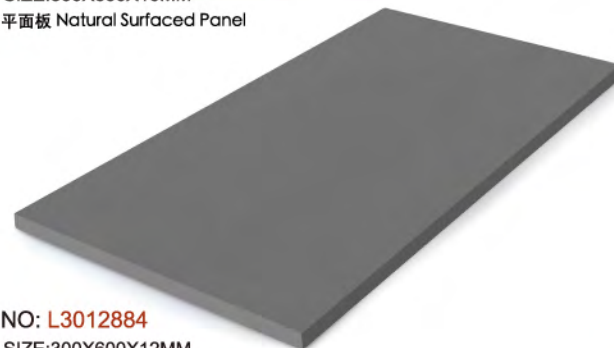
NO: FX301569  
SIZE: 300X600X15MM  
纹面板 Strip Panel



NO: L3010637  
SIZE: 300X600X10MM  
平板 Natural Surfaced Panel



NO: L3013636  
SIZE: 300X600X13MM  
平板 Natural Surfaced Panel



NO: L3012884  
SIZE: 300X600X12MM  
平板 Natural Surfaced Panel



NO: LW3012217  
SIZE: 300X600X12MM  
木化陶 WOOD PANEL



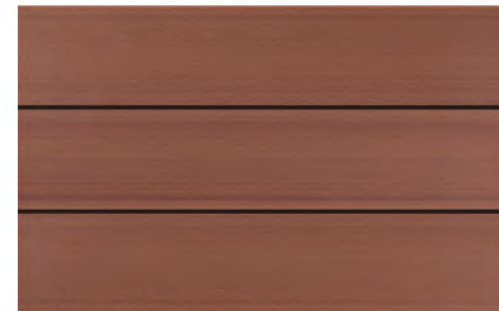
木化陶系列  
TERRACOTTA FAÇADE PANELS  
WOOD PANEL  
SIZE: 300X600/900X12MM  
150X600/900X12MM



NO: LW1510217



NO: LW1510617



NO: LW1510717



NO: LW1510817



NO: LW1510616



NO: LW1510716



No. LW1010617  
SIZE: 100X300X10MM



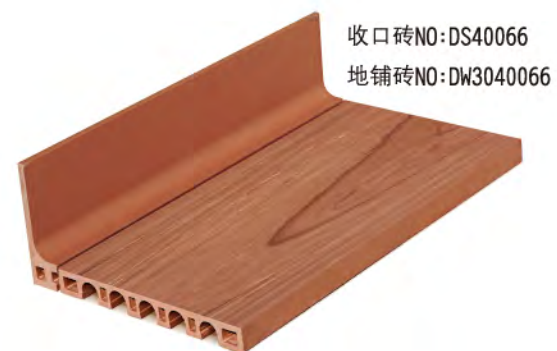
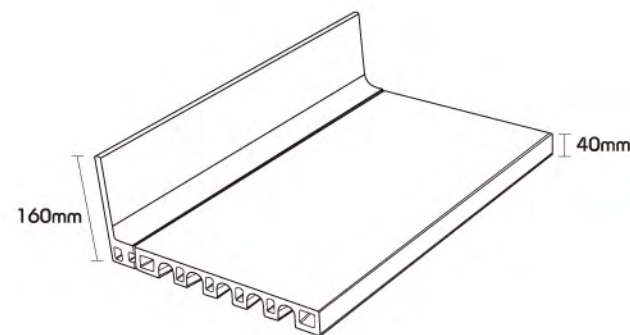
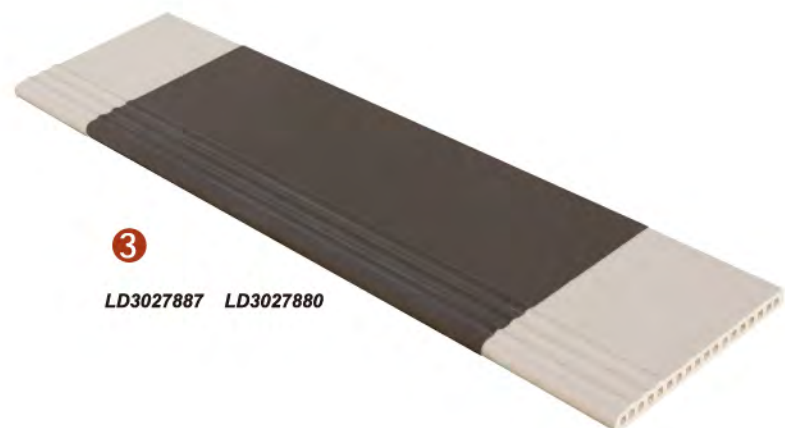
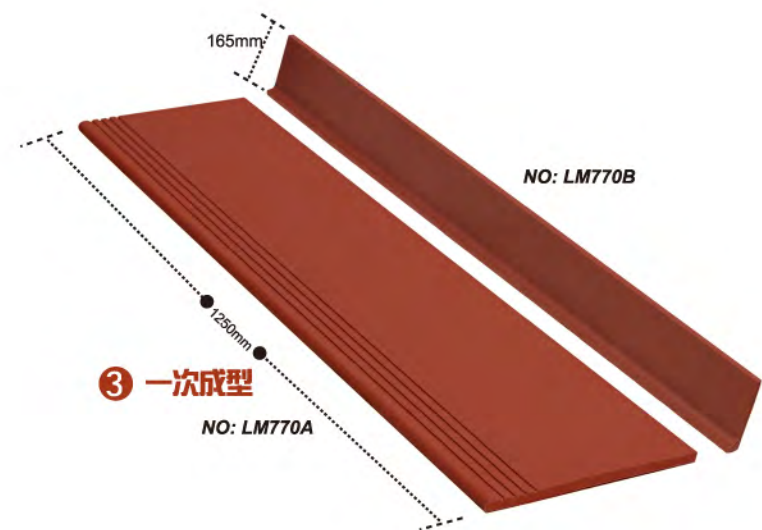
No. LW1010217  
SIZE: 100X300X10MM

**1 窗户板** WINDOW PLATE SERIES

**2 转角板** ANGLE PLATE SERIES

**3 防滑楼梯** TERRACOTTA FACADE PANELS

注：长度根据要求定制  
Note: The length has custom-made according to the request

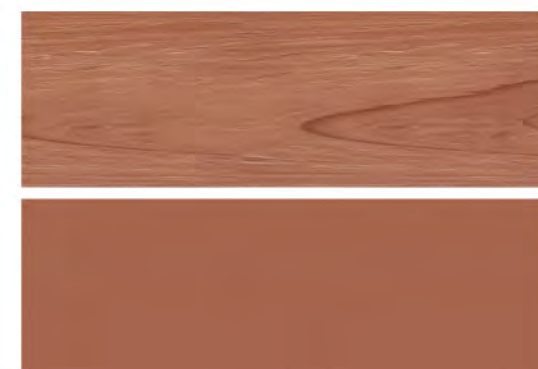


# 全球首创

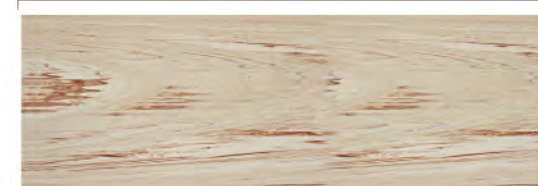
拥有国内国际 (PCT) 发明专利

## 乐普陶 地暖地板系列产品

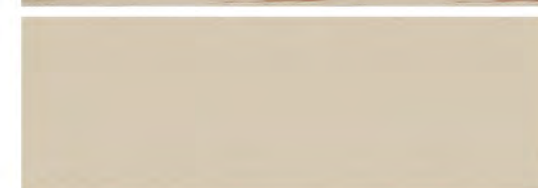
LOPO Clay floor heating Series of products



900mm



300mm



★ 详情见地暖画册





# Colors

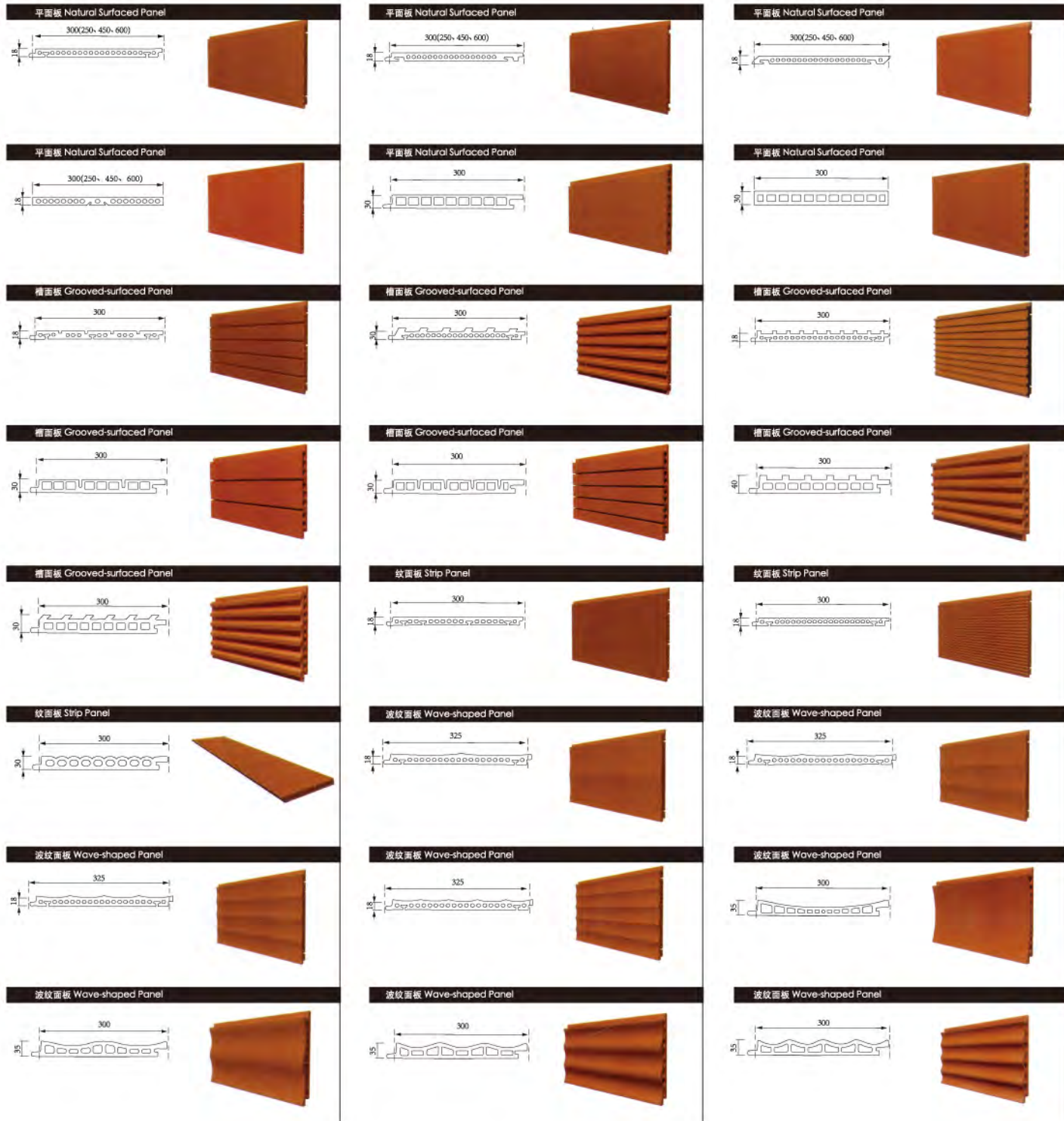
Terracotta Facade Panels  
陶板产品色卡

	
杏黄色 Apricot Yellow	白色 Apricot Yellow
	
香槟黄 Yellow	淡灰色 Beige
	
灰黄色 Grey Yellow	长城灰 Grey Wall Grey
	
桔黄色 Orange	深灰 Deep Grey
	
浅红色 Light Yellow	灰黑色 Dark Grey
	
珊瑚红 Coral	咖啡色 Coffee
	
天然红 Natural Red	巧克力色 Chocolate
	
深红色 Deep Red	土红色 Red soil

# 乐普陶板 Terracotta Facade Panels

## 平板 表面效果 Natural Surfaced Panel

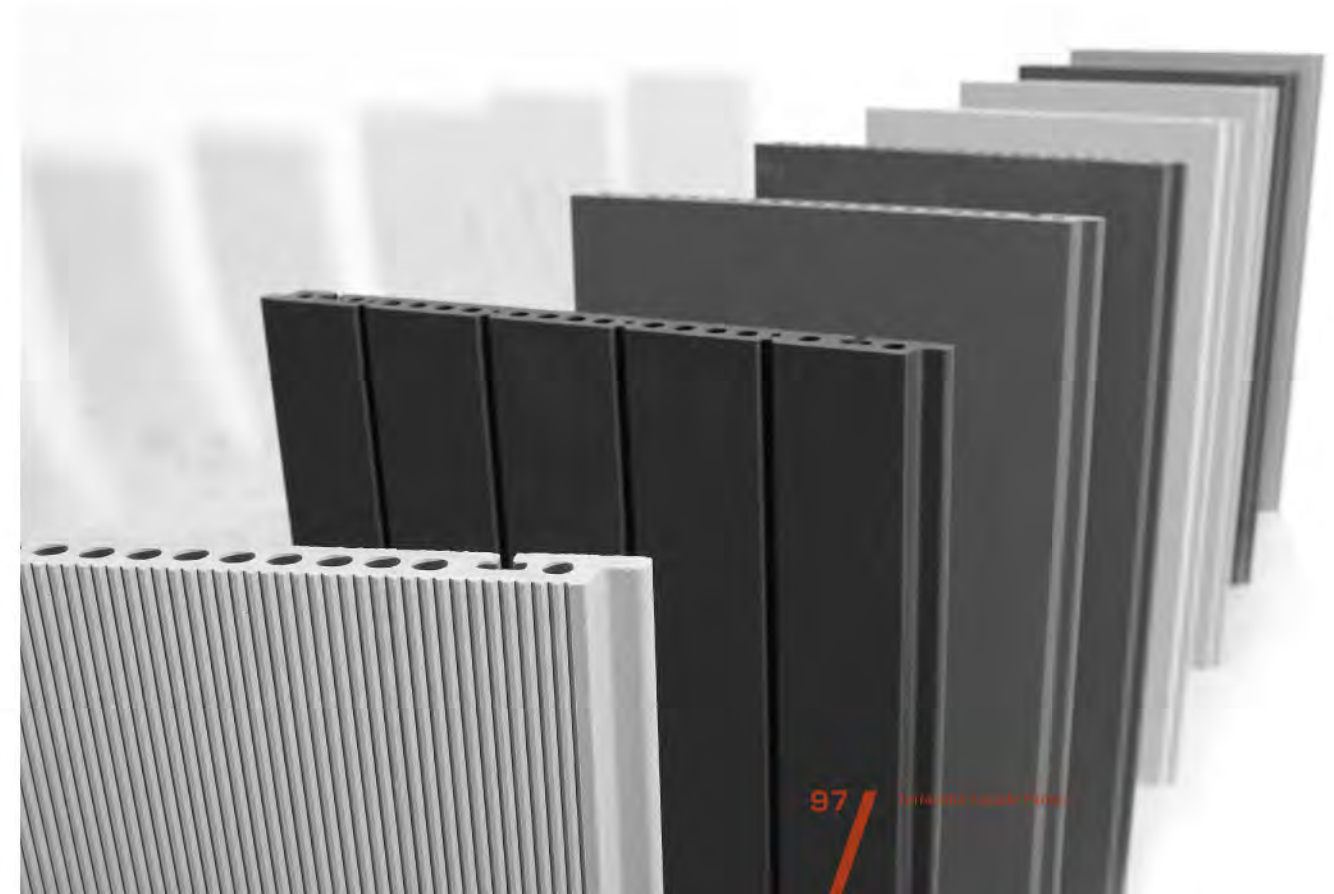
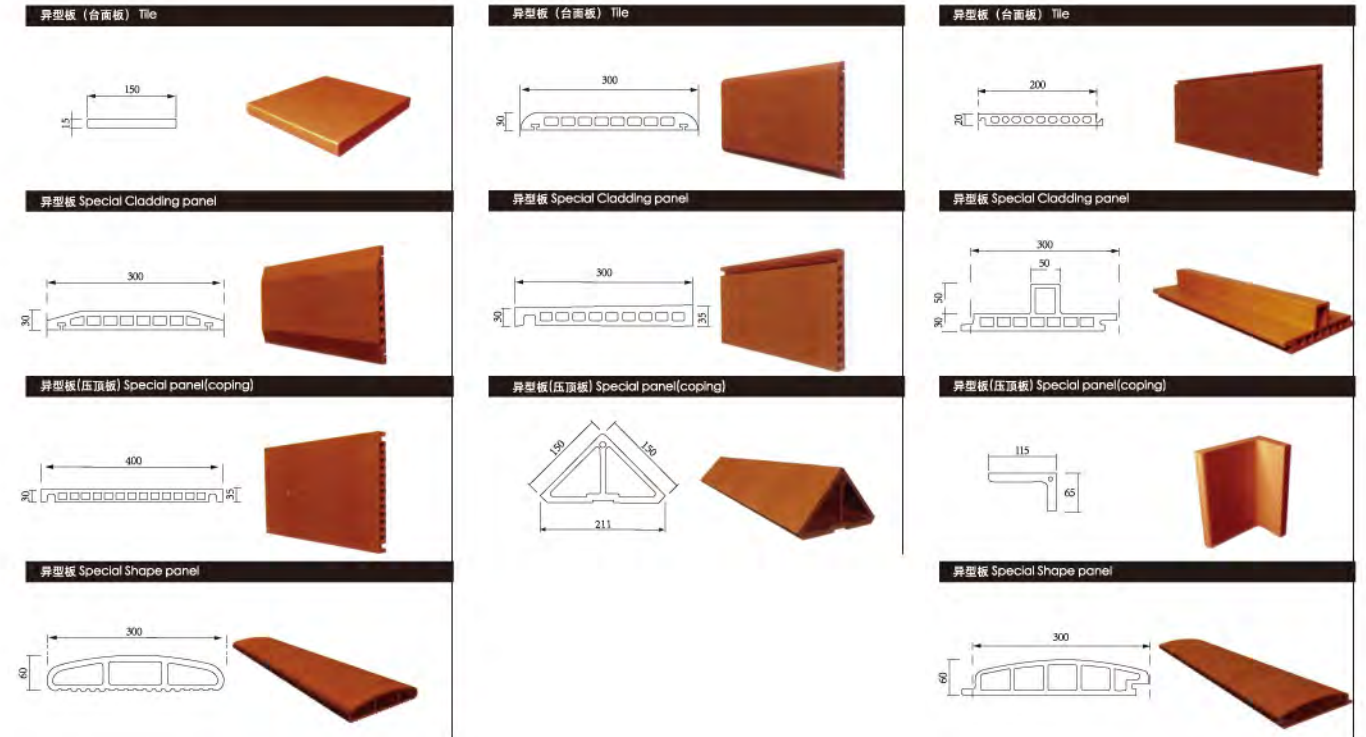
注: 长度根据要求定制  
 Note: The length has custom-made according to the request  
 规格: 宽度为: 150mm-600mm 长度: 250mm-1500mm 厚度为: 15mm-45mm



# Terracotta Facade Panels 乐普陶板

## 异形陶板系列 Special cladding panels

注: 长度根据要求定制  
 Note: The length has custom-made according to the request  
 规格: 宽度为: 150mm-600mm 长度: 250mm-1500mm 厚度为: 15mm-45mm



# 立方陶<sup>系列</sup> TERRACOTTA STICK





## 立方陶<sup>系列</sup> TERRACOTTA STICK

它以闪耀的光芒，为建筑插上一支别致“发簪”。它不似传统幕墙般单调统一。它以巧妙的身姿与陶板完美结合，打破了传统单一的幕墙构造，使建筑达到更美的效果。

It with sparkling radiance, for construction planted a chic "out". It is not like a monotonous traditional curtain wall is unified. It by artful posture and clay tablets perfect union, have broken the traditional single curtain wall structure, make a building to better effect - room more beauty.



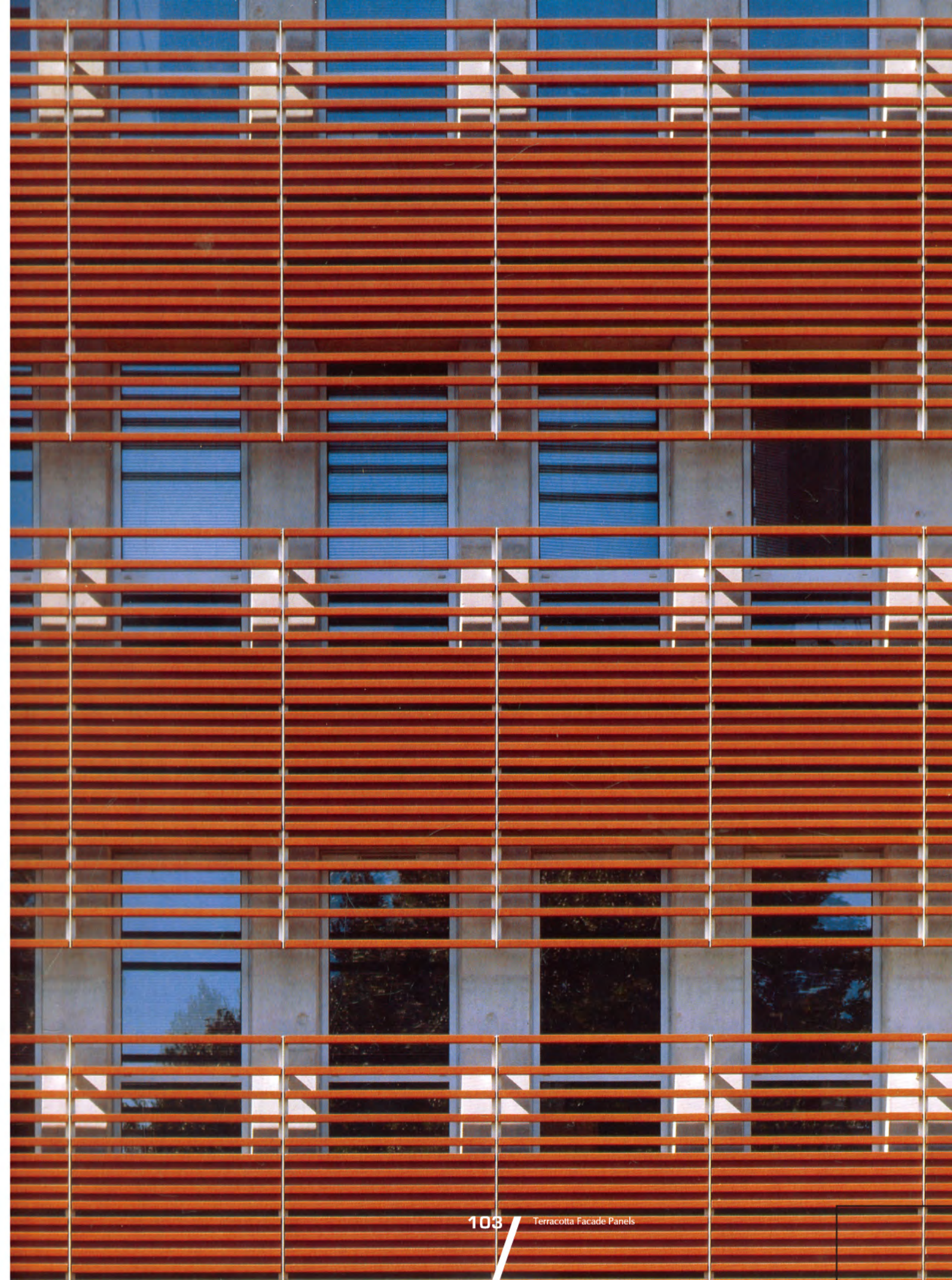
乐普陶板工程：巴南林语溪售楼處





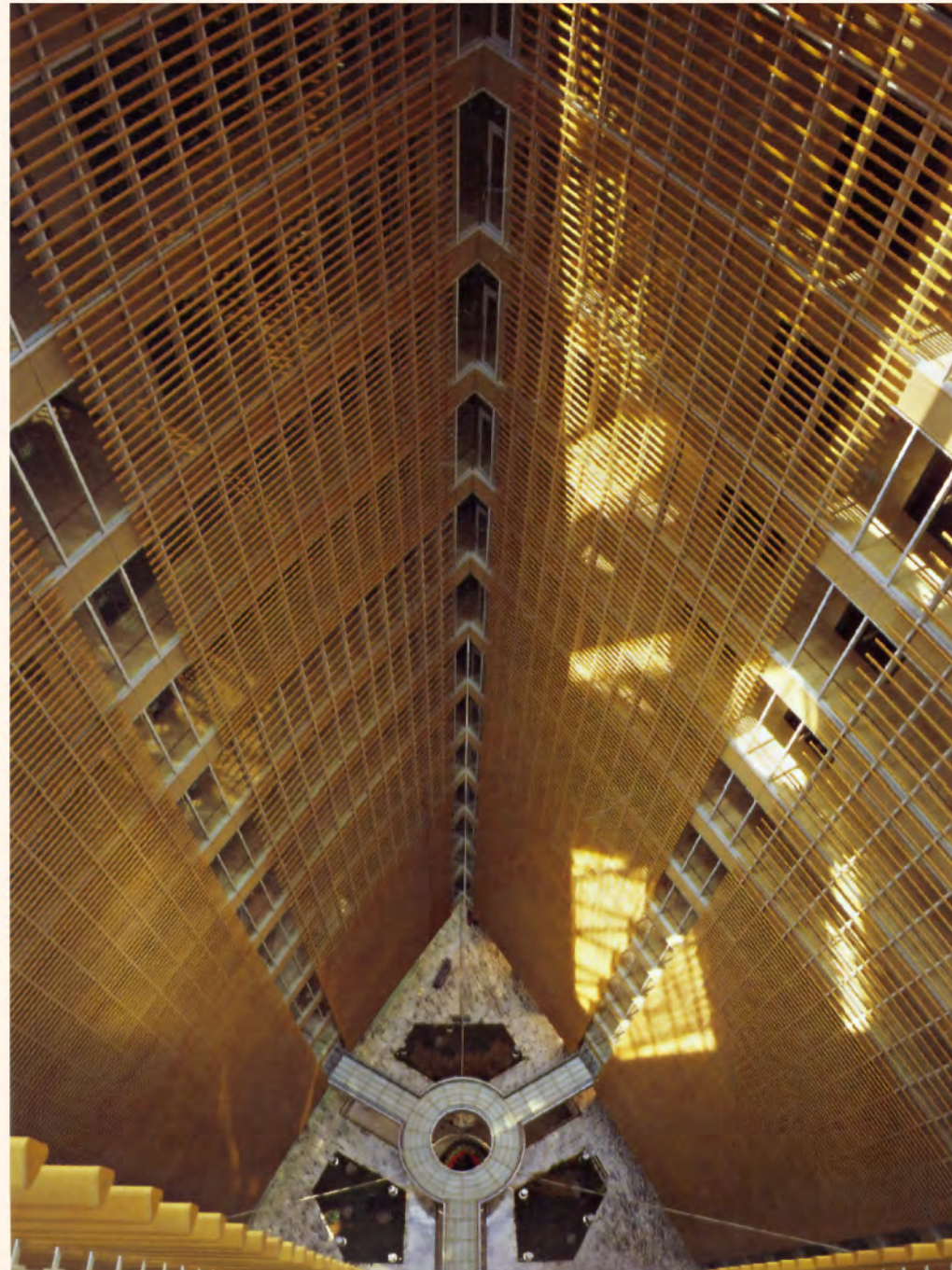
简约和对要素的绝对把控，是建筑师设计这座非凡建筑的指导方针。建筑前部安装的红色陶棍与发光的主建筑形成对比，十分迷人。水泥和陶板材料的有意识选用，体现出传统与现代的结合。因其功能性，陶棍在这里的排列显得分外出色：由于空间的巧妙分割，楼内的人员无论站立或是坐下，都能欣赏到别致的景观。

Clinical simplicity and concentrating on the essentials were the architects' guiding principles for this exceptional office building. With their warm red color, the front-mounted BAGUETTES provide a charming contrast to the gleaming main building. The choice of both concrete and ceramic materials was consciously made to reflect the interaction between the traditional and modern. The arrangement of terracotta bars here is clever because of its functionality: The spaces are divided so that people inside the building can enjoy specific views while standing or seated.



大厦的中心部位建有一个三面的中庭。在这里，许多奶黄色的三角形陶棍组成了一个充满光线的通透空间。阳光透射进来，营造出一种明亮而变幻的效果。尤为值得一提的是，这里所采用的陶棍组件以漆艺的形式出现，形成了衔接当代设计和东方传统文化的纽带。

The heart of the tower is formed by a three-sided atrium in which a cascade of rounded baguettes bars finished in creme yellow creates a transparent ambience that is suffused by light. The sunlight that filters through conjures up ever-changing, luminous effects. The ceramic components, in particular, form a link between contemporary design and oriental culture and tradition as it appears in lacquer art.





克雷泰伊大厦代表了不断前进的建筑理念。惹眼的挑檐结构庇护着深红色外墙的建筑。窄长的大板排列组合形成了封闭的表面，而在窗户和地下室位置则以较大的间隔安装。内墙也采用了深红色的陶棍。它们的随机排列组合让人联想起肋木。这些陶棍牢固地安装在底部结构上，透过陶棍底部结构清晰可见。

The new pneumology center of CHI Creteil stands for a progressive architectural concept.

The eye-catching projected roof structure shelters the dark red clad building-narrow Large elements are joined together to form closed surfaces and spaced wider apart over the window and basement areas. The interior walls are also clad in the dark red bars,which are arranged in a randomized pattern that is reminiscent of wall bars.They provide a clear view of the substructure to which the elements are secured by their sides.





NO:T356062  
SIZE:LTY3.5x6

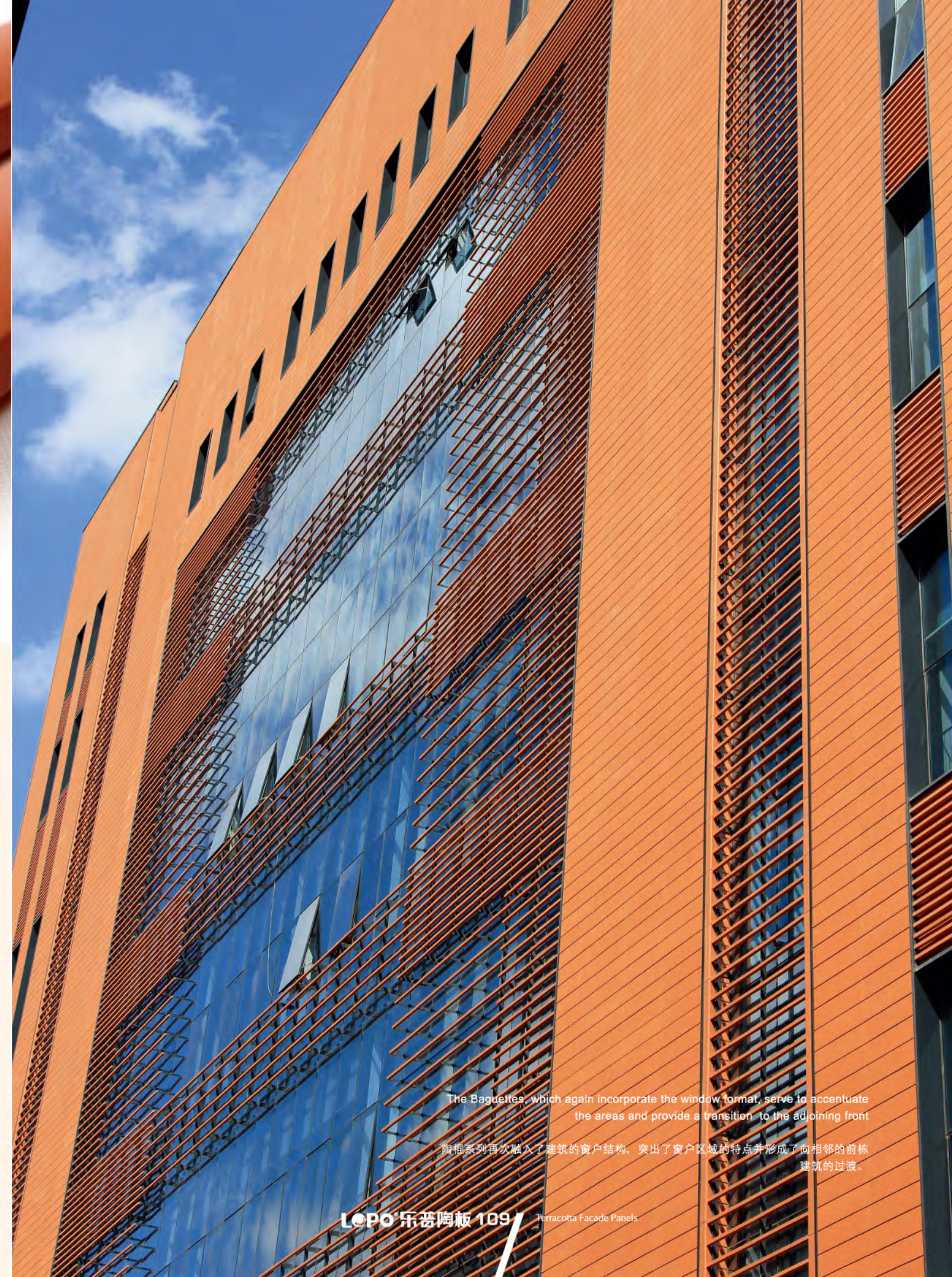
## 立方陶与陶板 Terracotta Stick Or Terracotta Facade Panels

它以闪耀的光芒，为建筑插上一支别致“发簪”。它不似传统幕墙般单调统一。它以巧妙的身姿与陶板完美结合，打破了传统单一的幕墙构造，使建筑达到更美的效果。

It with sparkling radiance, for construction planted a chic "out". It is not like a monotonous traditional curtain wall is unified. It by artful posture and clay tablets perfect union, have broken the traditional single curtain wall structure, make a building to better effect - room more beauty.

它以独特的美，为建筑披上一件完美“嫁衣”。它不似金属般的张扬跋扈；不似玻璃般冷若冰霜；也不似石材般深沉威严。它以静静的姿态，慢慢舒展，融入整座建筑，散发独特魅力。触摸之下，那微微起伏的肌肤让您感到无比的亲近；触目之下，温暖柔和的色泽让人感到无比的舒畅。这种由内到外的美，也成就了陶板成为现代建筑幕墙的“新宠儿”。

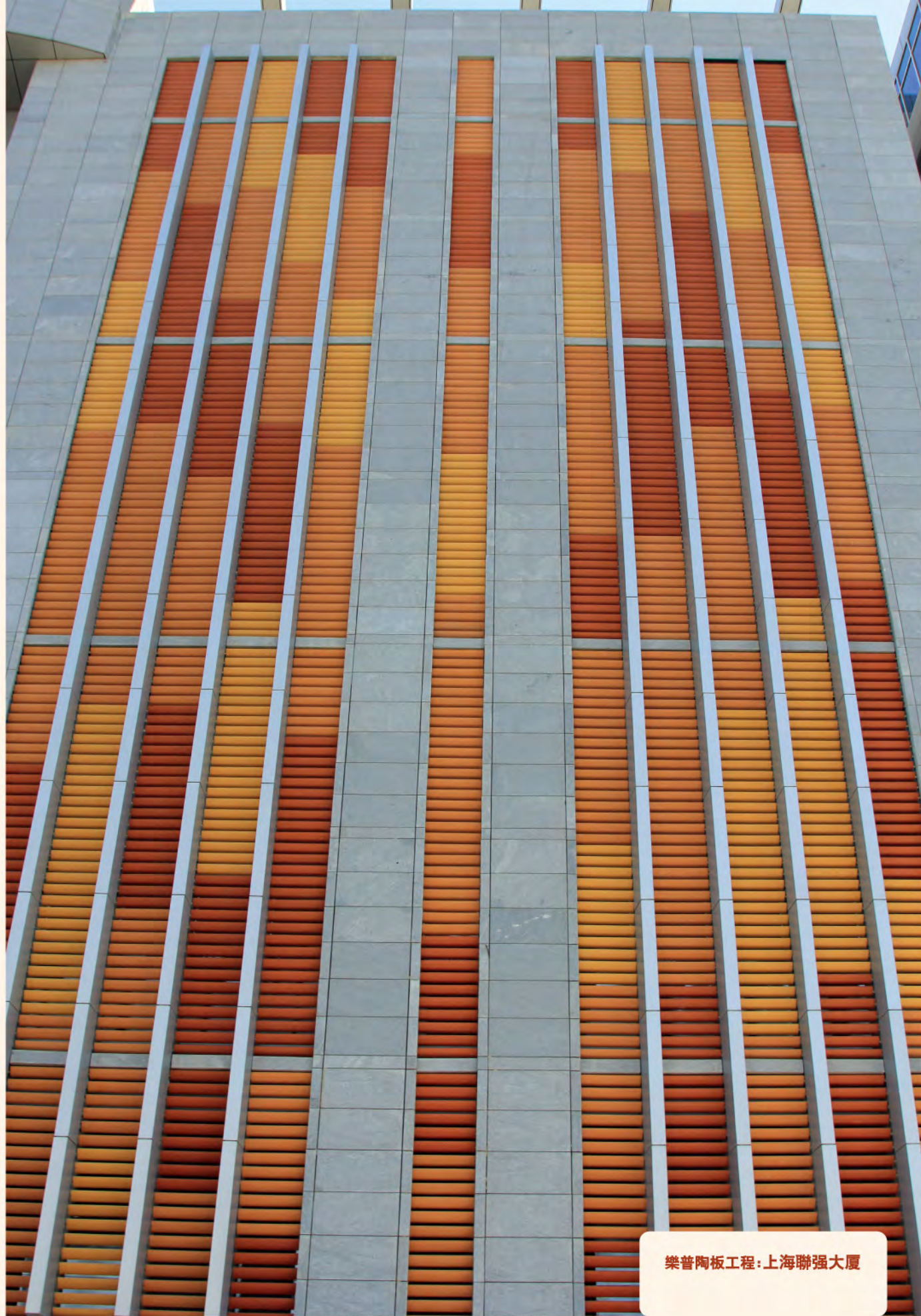
It by the unique beauty, for building with a perfect wedding. It is not like metal of make public defiant, Not as cold as ice like glass, Don't like stone like deep majesty. It with quiet posture, slow stretches, blend in the entire building, send out unique charm. Touch under, the tiny undulating skin to let you feel matchless to come near, An unhealed under, warm downy colour and lustre lets a person feel matchless and relaxed. This kind of from inside to outside beauty, and accomplished contented board becomes the modern building curtain wall "new pet".



The Baguettes, which again incorporate the window format, serve to accentuate the areas and provide a transition to the adjoining front

陶棍系列再次融入了建筑的窗户结构，突出了窗户区域的特点并形成了向相邻的前栋建筑的过渡。





樂普陶板工程：上海聯强大厦

# 立方陶系列 TERRACOTTA STICK

最长可生产SIZE:1800mm



NO:T4018026  
SIZE:LTY4X18



No. T4520003  
SIZE:200X600X45



NO:T4018060  
SIZE:LTY4X18



NO:T505026  
SIZE:LTY5X5



NO:T5010001椭圆  
SIZE:LTY5X10



NO:T4018069  
SIZE:LTY4X18



NO:T505063  
SIZE:LTY5X5



NO:T5010086椭圆  
SIZE:LTY5X10



NO:T5018069  
SIZE:LTY(2+5)X18



NO:T505064  
SIZE:LTY5X5



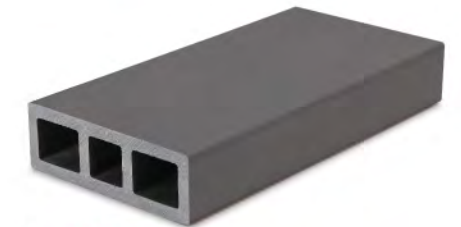
NO:T5010069椭圆  
SIZE:LTY5X10



NO:T4018076  
SIZE:LTY4X18



NO:T505069  
SIZE:LTY5X5



NO:T5015086  
SIZE:LTY5X15



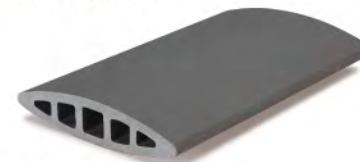
NO:T5018076  
SIZE:LTY(2+5)X18



NO:T505001  
SIZE:LTY5X5



NO:T5015069  
SIZE:LTY5X15



NO:T4018086  
SIZE:LTY4X18



NO:T505083  
SIZE:LTY5X5



NO:T5010069  
SIZE:LTY6X10

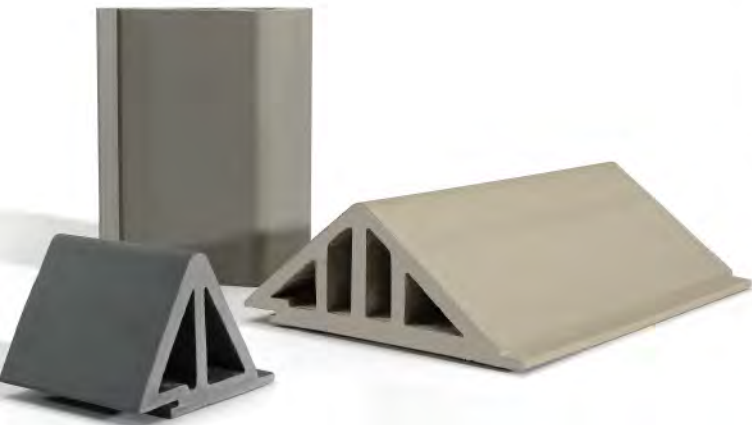


NO:T5018088  
SIZE:LTY(2+5)X18



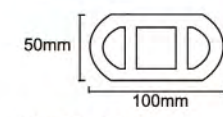
NO:T505085  
SIZE:LTY5X5

# 立方陶造型 TERRACOTTA STICK



最长可生产SIZE:1800mm

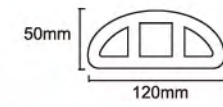
百叶系列 LOUVER SERIES



SIZE:50x100mm  
NO:LTY5x10



百叶系列 LOUVER SERIES



SIZE:50x120mm  
NO:LTY5x12



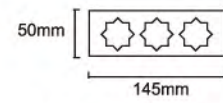
百叶系列 LOUVER SERIES



SIZE:70x400mm  
NO:LTY7x40



百叶系列 LOUVER SERIES



SIZE:50x145mm  
NO:LTY5x14.5



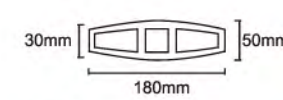
百叶系列 LOUVER SERIES



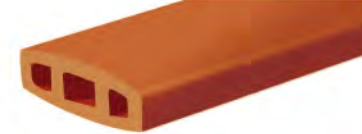
SIZE:60x200mm  
NO:LTY6x20



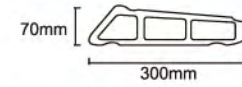
百叶系列 LOUVER SERIES



SIZE:(30+50)x180mm  
NO:LTY(3+5)x18



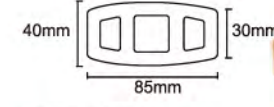
百叶系列 LOUVER SERIES



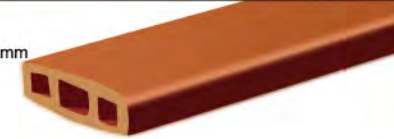
SIZE:70x300mm  
NO:LTY7x30



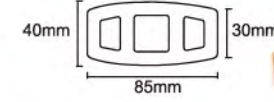
百叶系列 LOUVER SERIES



SIZE:(30+40)x85mm  
NO:LTY3x8.5



百叶系列 LOUVER SERIES



SIZE:(30+40)x85mm  
NO:LTY3x8.5



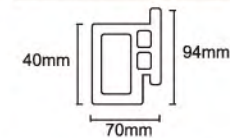
百叶系列 LOUVER SERIES



SIZE:40x180mm  
NO:LTY4x18



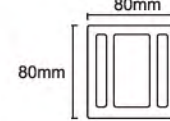
陶棍系列 TERRACOTTA STICK SERIES



SIZE:(40+94)x70mm  
NO:LTY4x7



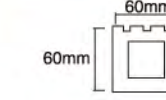
陶棍系列 TERRACOTTA STICK SERIES



SIZE:80x80mm  
NO:LT8x8



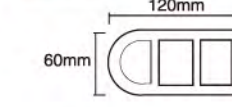
陶棍系列 TERRACOTTA STICK SERIES



SIZE:60X60mm  
NO:LTY6x6



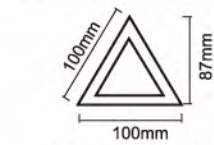
陶棍系列 TERRACOTTA STICK SERIES



SIZE:60X120mm  
NO:LTY6x12



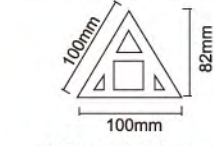
陶棍系列 TERRACOTTA STICK SERIES



SIZE:100X100x87mm  
NO:LTS-10x8.7



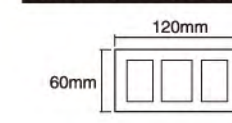
陶棍系列 TERRACOTTA STICK SERIES



SIZE:100X100x82mm  
NO:LTS-10x8.2



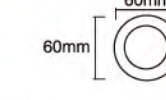
陶棍系列 TERRACOTTA STICK SERIES



SIZE:60X120mm  
NO:LTY6x12



陶棍系列 TERRACOTTA STICK SERIES



SIZE:60X60mm  
NO:LT6x6



# 陶板的优势特点

## Characteristic of terracotta panel

### 陶土板与其他幕墙相比的优势

#### 1. 色彩

石材: 色彩单一无法满足设计师的要求, 此外, 石材, 不论是大理石或是花岗岩, 其板面都会随着时间的推移而褪色、变色。

金属板: 虽然能够根据设计师要求来调配颜色, 却又因为金属质感过于强烈, 耐久性差, 也无法成就建筑设计师的梦想。并且, 在风吹雨淋的情况下, 因为污染, 很容易变形、褪色。

陶土板: 色彩丰富, 色泽自然具有独特的艺术气息, 能将建筑设计师的设计理念形象化, 将建筑和艺术融为一体。陶土板用天然材料陶土烧制而成, 凝聚了陶土的自然色泽, 富有独特的艺术气息。陶土色彩丰富, 从沙土色、土黄、土红、砂灰、青灰到珍珠白、桃红、银灰、铁灰等颜色, 自然淳厚, 加上自然面、喷砂面、槽面、釉面等表面工艺的处理, 冷暖色彩分明, 得到很多建筑设计师的青睐。其次, 陶土板物理性能良好, 硬度大, 永不变形, 永不褪色, 色差小。

#### 2. 安全和抗震性、节能环保、耐酸碱性能

石材: 它是天然物品, 含有丰富的氧化硅、氧化铝或碳酸钙等矿物成分, 同时它们都含有放射性元素——氧。

金属板: 金属板更是惧怕酸碱的腐蚀。

陶土板: 其原材料来自天然的陶土, 它本身不会含有任何放射性元素; 经过1200度高温煅烧后, 陶土里所含有的部分矿物元素(氧化铝、氧化硅等)已经完全氧化。

#### 3. 节能环保

石材: 是不可再生的天然材料, 而且不能回收利用;

金属板: 多采用铝合金, 世界铝矿产资源已经相对枯竭, 金属板自身厚度受限, 导热系数高, 不具备任何节能功效。

陶土板: 陶土是可再生资源, 且能够回收利用。在生产工艺上, 陶土板的工艺决定其相对是环保的, 能耗较低。陶土板幕墙自身的空腔结构再加上必要的保温体系, 能够起到很好的节能降噪功能。

#### 4. 安装上

石材: 石材幕墙的安装基本上都是采用背切锚栓或是开槽挂件安装, 无论哪种方式都会破坏石材自身结构的应力, 在一定条件下, 当应力释放完毕后就出现破裂或损坏, 安全性能和抗震性都相对较低

金属板: 金属板的壁厚较薄, 在外力作用下容易变形而产生破坏, 安全性能较低。

陶土板: 在挤压时已经考虑挂接安装问题, 预留槽口, 挂接方便, 加上高达16—20Mpa的强度, 安全性能和抗震性能都远远优于石材、金属板等材料。

### Advantages of terracotta panel over other curtain walls

#### 1\*Color

Stone: Its monotonous color can not meet the requirement of a designer. In addition, the surface color of marble or granite will fade or change over time.

Metal panel: The color of a metal panel can be adjusted according to the requirement of the designer. However, this material has limited applicability because of the cold metallic texture and poor durability. Besides, metal panel is easily to get deformed and discolored due to wind and rain corrosion.

Terracotta panel: The rich colors and natural texture of terracotta panel is capable of satisfying different requirement for architect. There are various kinds of colors for argil, such as sandy color, desert tan, terra rossa, sandy grey, green blue, pearl white, peak read, silver grey and dark grey etc. The surface treatment process can also produce different style, such as natural surface, abrasion blasting, groove surface and glaze surface of architecture designers. Moreover, the physical performance of terracotta is excellent: strong hardness, anti-deformation, good fastness and small color difference.

#### 2\*Safety & shock resistance Acid and alkali resistance

Stone: Stone is natural resources which are rich in mineral compositions like silicon oxide, aluminum oxide or calcium carbonate. It also contains the radioactive element - radon.

Metal panel: Metal panel is easily corroded by acid and alkali.

Terracotta panel: The raw material of terracotta is natural argil which contains no radioactive element. After the firing process under high temperature of 1200 degree, all mineral elements (silicon oxide, aluminum oxide and so on) in the argil are oxidized completely.

#### 3\*Energy saving & environment protection

Stone: Stone is nonrenewable and recyclable natural material;

Metal panel: Most metal panels are made of aluminum alloy. The aluminum ore resource in the world is becoming exhausted. Besides, the metal panel has high coefficient of thermal conductivity and fails to be energy-saving.

Terracotta panel: Clay is renewable and recyclable resource. The process for producing the terracotta is relatively environment-protective. The Cavity structure of the terracotta wall and the additional insulation system will provide favorable performance of energy saving and noise reduction.

#### 4.Installation

Stone: Installation method of stone curtain wall basically is grooving in the back of stone and installing with anchor bolt. No matter what method is adopted, the stress of the stone structure will be damaged. Under certain circumstance, the stone curtain wall will crack or be damaged after the stress is completely released. Consequently, the safety performance and shock resistance are relatively poor.

Metal panel: Metal panel is relatively thin comparing to other material. Therefore, the metal panel is easily to be deformed and damaged under the impact of external force. The safety performance is relatively poor.

Terracotta panel: The groove for installation is prearranged during the extrusion process which is very convenient for installation. The strength up to 16-20Mpa provides the terracotta panel with better safety performance and shock resistance than that of stone and metal panel.



### 一:干挂陶板系列

- 规格: 宽度为:150mm-600mm 长度:250mm-1500mm 厚度为:15mm-45mm
- 结构: 空腔工艺孔
- 干挂方式: 1 厚度为20mm以下一般采用背面定位槽方式  
2 厚度为20mm以上一般采用侧边卡接方式
- 挂件: 采用铝合金+自紧弹簧片+缓冲胶垫
- 特性见下表:

	陶板	石材板	铝板	玻璃幕	瓷板
材质	软、硬质陶土	花岗岩、大理石、砂岩	金属铝	石英的碱性胶体	矿石加少量粘土
容重	1.4-1.7kg/cm <sup>3</sup>	2.4-2.7kg/cm <sup>3</sup>	2.7kg/cm <sup>3</sup>	2.5kg/cm <sup>3</sup>	2.3-2.5kg/cm <sup>3</sup>
干挂系统	自带挂接槽, 标准安全简单	现场加工, 易碎, 有安全隐患	现场加固	现场加固	现场加工, 易碎, 有安全隐患
呈色机理	各种粘土在高温下自发色而调合不加化工色料, 大面积使用可保障色彩一致	天然色彩, 色彩的一致性受矿山影响较大	后上色, 色料多为有机色料, 一致性好但易褪色	重金属氧化物发色	重金属氧化物发色
耐久性	十年不新, 百年不旧	易二次风化	易被氧化	易被腐蚀	易二次风化而褪色
抗酸碱性	强	一般	差	差	一般
自洁性	无静电, 表面粗糙, 无吸附力	吸附力一般	吸附力强	吸附力强	吸附力一般
放射性	无	花岗岩易含放射性元素	无	绝色玻璃易含放射性元素	个别含放射性元素
低碳性	中空工艺, 隔热, 降噪性能优, 自重轻, 节约大量的安装钢材, 粘土材质, 导热系数不到石材的一半, 百年后可循环使用。	隔热, 降噪性能差, 自重大, 须加固	无隔热性, 自重轻	透光性好, 无隔热性	隔热、降噪性差, 自重大, 强加固
生产过程环保性	原料无须过度加工, 无废水, 原料取自页岩和陶土, 资源丰富, 开采容易, 并可大量用煤渣等废弃物。	加工会产生大量废水, 资源小, 开采对环境破坏大	铝资源越来越稀缺	优质硅砂资源少	优质瓷土越来越少

个性特征

### 二:湿贴陶板系列

- 规格: 宽度为:80mm-450mm 长度:300mm-900mm 厚度为:12mm-15mm
- 结构: 实心, 背面有4-6mm深的燕尾槽
- 重量: 19-27Kg/m<sup>2</sup>
- 施工: 湿贴, 无须勾缝, 现场红外线定位, 无须放线, 大大降低人工成本和施工成本。规格轻大的板, 须在墙上打每平米三到五个定位水泥钉。
- 粘接强度: 拉拔力可超国标1.5倍。
- 此类产品可四边磨边, 尺寸误差可控制在±0.5mm, 非常适应工厂化住宅安装。

### 三:其它方式陶板

- 立方陶系列
- 无缝楼梯踏步系列
- 老年公寓地板砖系列



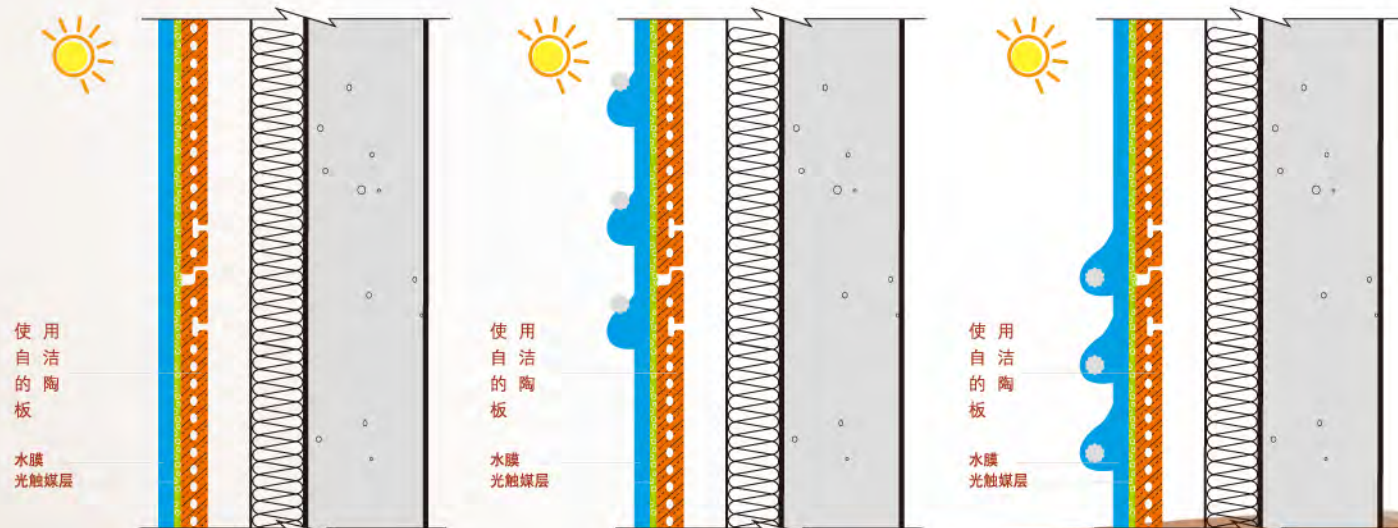
- 净化空气
- 保持建筑物清洁外观
- 分解细菌及污垢



### 自洁

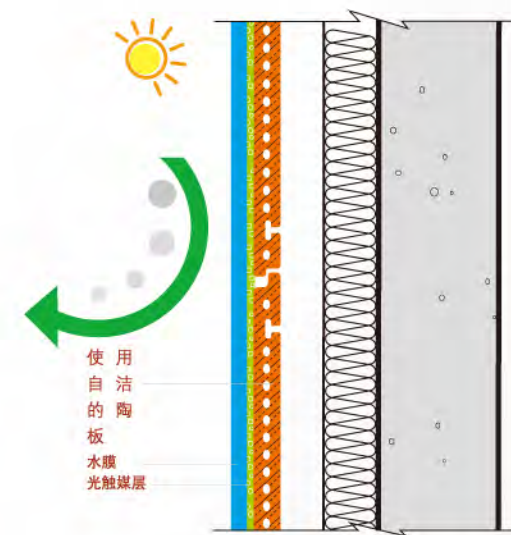
新涂清洁外墙面受车辆废气等油垢污染后完全发黑。除此以外，扩散于空气中的废气灰尘等混入雨中使污染更加严重。

在光与水的作用下，光触媒层、抗菌物质和亲水性物质三者完美结合，加上陶土的特质，乐普陶板的自洁功能，环保效果不言而喻。



亲水性

1. 抑制垃圾、灰尘吸附
2. 油性污物更易滑落
3. 利用雨水的力量冲洗



# 优特点 CHARACTERISTIC

## 乐普陶板产品优势 LOPO Advantages of Products

### 永不褪色 Never fade

原料取自高品质优质陶土，经高空高压挤压成型、高温烧制而成。具有低耗能、无辐射、无光污染、不褪色的特点，并能有效抵抗紫外线的照射，经久耐用，100%的可重复回收利用，是环保材料首选。

Raw material from high quality natural pure argil, via vacuum highpressure extrusion molding, the high temperature burn becomes. With low consumption and no radiation, light pollution, do not fade characteristics, and can effectively resist ultraviolet radiation, durable, 100% of the repeatable recycling, is environmental protection material choice.

### 防水保温，隔音降噪 Insulation, sound insulation waterproof noise

空腔的产品设计大大降低了材料的自重，减轻建筑外立面结构系统负荷，同时经过高温煅烧，可有效降低它的热传导系数，更具保温节能、隔音降噪功效，提高建筑使用经济性及舒适性。高压挤压成型方式，使陶板具备更大的强度，使其最大限度的增强了对抗恶劣天气的性能，防水性能极佳。

The cavity of product design greatly reduces the materials of self-respect, reduce building facade structure system load, meanwhile, after high temperature firing, can effectively reduce the heat transfer coefficient, more of its heat preservation and heat insulation, sound insulation effect, raise architectural noise use economy and comfort. High-pressure extrusion way, make ceramic plate with greater intensity, make its maximum enhanced against the bad weather, the properties of waterproof properties is admirable.

### 防火抗冻 Fire anti-freeze

先进的工艺设备、准确的切割、严格的校量，确保产品尺寸及品质的稳定。产品具有良好的安全防火特性，耐酸碱腐蚀，耐刮伤和磨损，即便面对超常高温或低温霜冻，也会保持极佳的稳定性能。

Advanced technology and equipment, precise cutting, strict calibrated, in order to ensure the product quality and size stability. The product has good security fire characteristics, naisuajian corrosion resistant, scoring and galling and even face supernormal low or high temperatures frost, will be the excellent stable performance.

### 风雨自洁 Rain consecrated themselves

陶土原料金属含量低，不产生静电，不容易吸附灰尘，污物不容易沉积，经风吹，雨冲刷即可自洁。

Clay materials metal content is low, do not produce electrostatic, not easy to absorb dust, dirt not easy deposition, via the wind, rain scouring can consecrated themselves.

### 淳朴自然 Simple natural

色彩丰富，基本涵盖了现代建筑对主流颜色的设计需求。自然质感及其永恒的陶土颜色，气质内敛而不张扬，使建筑更富艺术气息。

Color is rich, basic covers the modern architecture for mainstream color design requirements. Natural texture and eternal clay colors, temperament and not make public, collect architecture more rich artistic breath.

### 板型超群，规格多样 Board type superior, norms diversity

乐普提供多种产品选择，规格尺寸齐全，通过选用不同的产品组合，根据不同的安装尺寸要求进行切割，来满足设计师的设计风格，使陶土屋面建筑具有壮观美丽的视觉冲击效果。

Room more beautiful offers a variety of products to choose, its size is complete, through selecting different product combination, according to the different requirements for cutting installation dimensions, to satisfy the designer's style, make clay roof building with its stunning visual impact effect.

## 乐普陶板技术优势 LOPO Advantages of Technology

### 开放式系统，隔热隔音 Open system, heat insulation

开放式系统陶板拼挂方式，有利于保护建筑主体结构免受恶劣天气和空气污染的侵蚀。能防止墙面产生沉积物，保持幕墙美观。同时可有效降低传热系数，有效改善建筑墙面的声学性能，整个体系可以起到隔热、隔音、通风、排湿功效，能有效地改善夏天室内温度环境，消除热桥效应，节约能耗。

Open system clay tablets spell hang way, be helpful for protecting architectural main structure from inclement weather and air pollution of erosion, can prevent metope produce sediments, keep curtain wall and beautiful. At the same time can effectively reduce the heat transfer coefficient, effectively improve the building of metope acoustics performance, the whole system can rise to heat insulation, sound insulation, ventilation, the platoon is wet effect, can effectively improve the indoor temperature environment, eliminate summer thermal bridge effect, saving energy consumption.

### 防水防撞设计，抗压抗震 Waterproof impact-proof design, compressive seismic

安装原理根据等压雨幕原理进行拼接设计，两端接口的分缝间采用EPDM胶条的特殊设计，能有效减少雨水的侵入，防止陶板侧向移位，防止相邻陶板之间碰撞。同时经过改进的陶板系统，提高了陶板幕墙抗震性，可达10度抗震设防以上，特别适合有抗风压及抗震要求的建筑。

Install principle according to pressure rain and curtain principle Mosaic design, interface between the points at both ends by EPDM rubber strip joints of special design, which can reduce the rain, prevent the invasion of the lateral displacement of clay tablets to prevent collisions between adjacent clay tablets. Meanwhile, after improvement clay tablets system and improve the ceramic board act wall extent, and can reach up to 10 degree seismic fortification above, especially suitable for have of wind and seismic requirements for buildings.

### 增加安装垫片，可单片更换 Add install gaskets, can replace single chip

陶板和挂件、挂件与横梁之间以柔性绝缘垫片隔开，提高系统的抗震性能，避免解决不同金属材料之间的电解腐蚀，并可消除噪声和变形。而且无需拆卸已安装好的陶板，就可将破损的陶板先物理损坏，单片更换新的乐普陶板。

Ceramic plate and articulated pieces, articulated pieces and beams with flexible insulation spacers between separated, and improve the system of the seismic performance, avoid to solve different metal material between the electrolysis of corrosion, and can eliminate noise and deformation. And without disassembly already installed clay tablets, can will be damaged clay tablets first physical damage, monolithic replacement of the room is more beautiful ceramic plate.

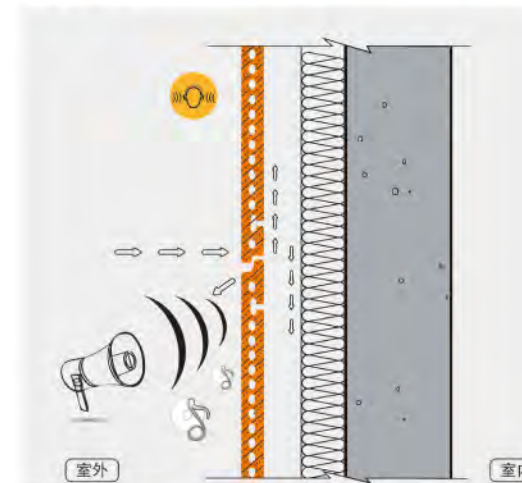
### 制作工艺精良，背通风 Production craft is excellent, back ventilated

陶板的加工采用先进技术控制，表面平整，尺寸稳定，能最大地满足幕墙收边、收口的局部设计需要，无论是平面还是转角或其它部位，都能保持幕墙立面的连贯、自然、美观。同时建筑的湿气可以在透过幕墙墙面后方被流动的空气带走，避免产生冷凝水，使建筑外墙保持干爽。

Ceramic plate processing adopts advanced technology control, smooth, dimension stability, can the most satisfies the curtain wall the edge is closed the local design needs, whether plane or corner or other areas, can maintain a glass facade coherent, natural and elegant. Meanwhile building moisture can through the curtain wall metope rear air flowing away, avoid to produce condensate, make exterior keep you dry.

## Acoustic insulation

隔音降噪



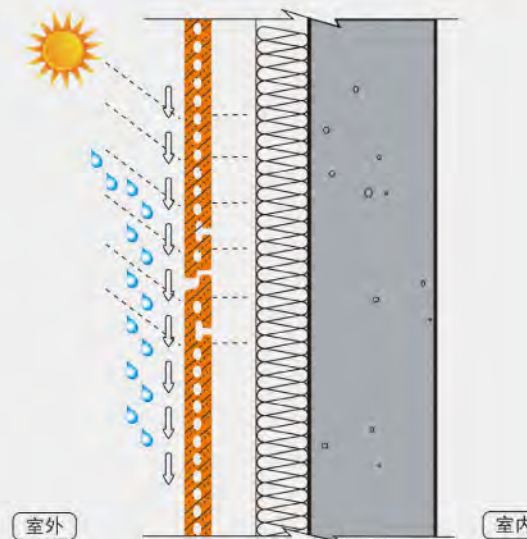
## Fire proof and anti-freeze

防火抗冻



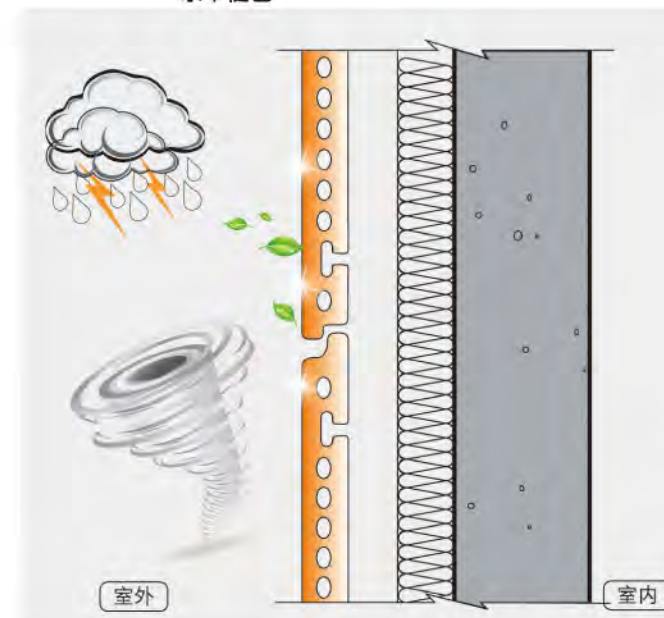
## Lightweight and waterproof

质轻而坚，防水保温。



## Never fade

永不褪色



# 陶瓦系列

## TERRACOTTA SERIES

建筑中的瓦(陶瓦)

瓦一般指粘土瓦。以粘土(包括页岩、煤矸石等粉料)为主要原料,经泥料处理、成型、干燥和焙烧而制成。中国瓦的生产比砖早。

从甲骨文字型中,知道3000多年前的屋脊有高耸的装饰或结构构件,但尚未有实物陶瓦的发掘发现。故可知此种构件可能是木制——已腐烂,或铜制——尚未被今人识别,但没有覆盖烧制的陶瓦。

陶瓦或于西周初年(公元前1066年)开始用于屋顶,从岐山遗址可见遗存,判断当时仅用于屋脊部分。到了春秋时期的遗址,较多发现板瓦、筒瓦、瓦当,表面多刻有各种精美的图案,可知屋面也开始覆瓦。

早在公元前640年在希腊奥林匹亚兴建的赫拉神庙,是有屋瓦的建筑物中最古老的,瓦用粘土烧成。烧瓦技术很快传遍欧亚。罗马人率先使用砂岩和石灰岩混合制瓦,12世纪才普遍使用黏板岩。

春秋早期,屋面覆瓦的建筑还不多,《春秋》隐公八年:宋公、齐侯、卫侯盟于瓦屋。会盟的地点是在周王朝的温,但经中仅记为覆盖有瓦的屋,可见这是在当时人人皆知的伟大建筑。到了战国时代,一般人的房子也能用瓦了。

到了秦汉形成了独立的制陶业,并在工艺上作了许多改进,如改用瓦榫头使瓦间相接更为吻合,取代瓦钉和瓦鼻。西汉时期工艺上又取得明显的进步,使带有圆形瓦当的筒瓦,由三道工序简化成一道工序,瓦的质量也有较大提高,因称“秦砖汉瓦”。



### Tile (terracotta) Applied to Architecture

Tile, generally referring to clay tile, is manufactured through pug processing, molding, drying and roasting, with clay (including shale, coal gangue and other powder) as the primary raw material. In China, tile was produced earlier than brick.

It can be learned from the fonts of inscriptions on oracle bones that the ridges over 3,000 years ago had towering ornament or structural component, but there was no material object of ceramic tile has been excavated or found at that time. So it can be inferred that the said structural component was probably made of wood (which may have been decayed) or copper (which has not been identified by modern people till now), instead of ceramic tile.

Perhaps ceramic tile began to be applied to roof in early Western Zhou Dynasty (about 1066 B.C.). Judging from the relics found in Qishan County, Shanxi Province, ceramic tile was only used on ridge then. But it can be learned that the ceramic tile began to be covered on roof during the Spring and Autumn Period, according to the historic site of this period where plate tile, semicircle-shaped tile and eaves tile engraved with a variety of exquisite designs on the surfaces were found.

As early as in 640 B.C., tile made of clay was used to build the Temple of Hera in Olympia, Greece, the most ancient building with roof tiles. The technology for making tile was spread throughout Europe and Asia soon. Romans took the lead in manufacturing tile by mixing sandstone and limestone. Clay slate was not used widely until the 12th century.

In the early stage of the Spring and Autumn Period, there were only few buildings covered with tile on roof. The Spring and Autumn Annals recorded that the Dukes of the states of Song, Qi and Wei allied in a tile house. No more explanations about the tile house were offered in this book except that it was a house located at Wen County of Zhou Dynasty and covered with tile. It can be seen that tile house was a well-known marvelous building at that time. By the Warring States Period, tile had been used for the houses of average people.

By Qin and Han Dynasties, independent pottery industry had formed and the processing techniques improved a lot. For example, tile nail and nose were replaced by tile tenon which could make tiles link more compactly. By the Western Han Dynasty, the process had made a striking progress again. Three working procedures to manufacture semi-cylindrical tile with decorative tile-end were simplified into one working procedure; meanwhile, better tile quality was available. So brick in Qin Dynasty and tile in Han Dynasty were well-recognized and popular then.



陶质无釉  
Natural Clay Without Glaze  
平板瓦 TERRACOTTA SERIES



NO: LPW-8003



NO: LPW-8002



NO: LPW8001



陶质无釉  
Natural Clay Without Glaze



NO: LPW-6006



NO: LPW-6002



NO: LPW-6005



陶质施釉  
Natural Clay Glaze



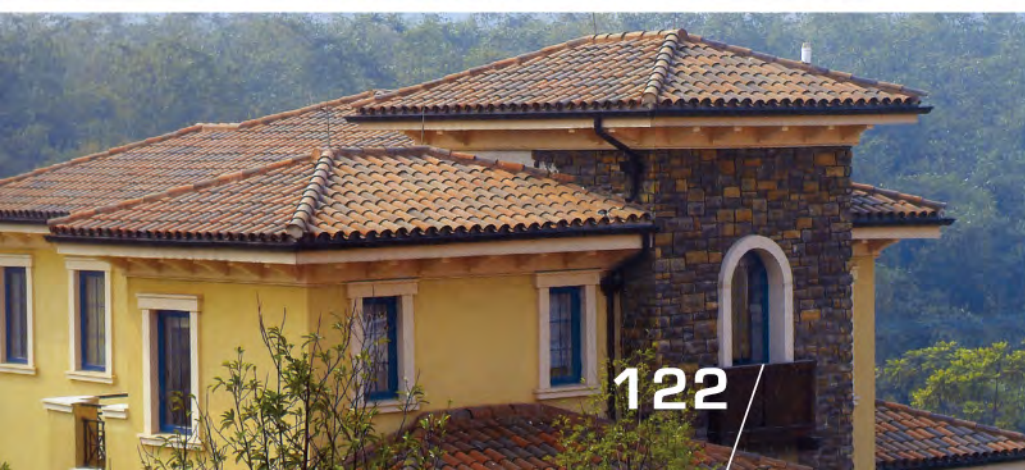
NO: LPW-5002



NO: LPW-5005



NO: LPW5003



122

LOPO. 乐普.

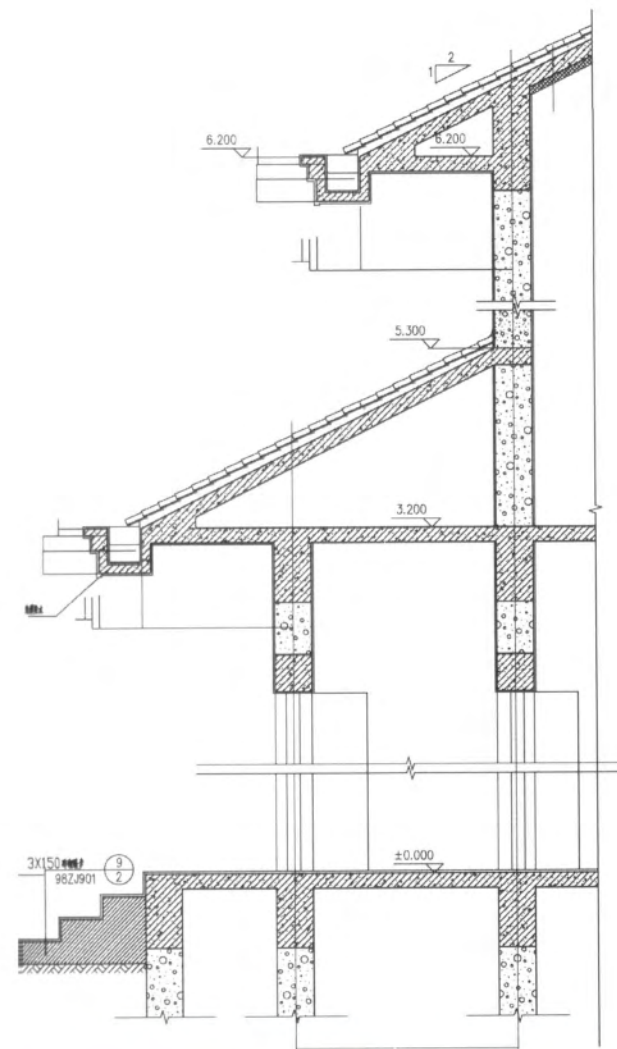


屋顶砖瓦的细节处理精致到位，筒瓦的上下错位铺设结构利于导向排水，色调不一致的混铺打破沉闷的形势，又显得古朴风情。

连续的屋面带来磅礴的气势，老虎窗的点缀为连续的屋面增添几抹动人的亮色，就像建筑的眼睛。

new construction, the architects for Stadtwerke Lingen public utility company have created an attractive and harmonious building complex in keeping with the successful exter

123 terracotta roof tile



整个建筑里简洁大方的线条愈加衬出屋面细节的精致，张扬着西班牙的热情，自由奔放，色彩绚丽，却又神秘而内敛。只有西班牙风情才能把如此极致的矛盾统一起来，让人心旌摇曳。

new construction, the architects for Stadtwerke Lingen public utility company have created an attractive and harmonious building complex in keeping with the successful exter

# 陶土瓦

terracotta series